

Calhoun County 2016 Storm Water Management Program Report

**Calhoun County Commission
1702 Noble Street
Anniston, Alabama 36201**

May-2017

2016 Calhoun County Storm Water Management Report

Table of Contents

1. Certification	3
2. Introduction	4
2.1 Location	5
2.2 Responsible Party	6
3.0 Storm Water Management Program Requirements.....	8
3.1 Public Education and and Public Involvement on Storm Water Impacts	8
Television	8
Newspaper	8
Stormwater Webpage.....	9
Earth Day Activities	9
Public Presentations	10
Workshops (Public and County Staff).....	12
Measure of Success.....	12
3.2 Public Involvement and Participation	13
Involvement of General Public, Civic Organizations, Clubs and Associations	13
Free Landfill Day Program.....	14
County Litter Patrol.....	16
Calhoun County Recycling Program	17
Storm Drain Marking.....	18
Webpage.....	20
3.3 Illicit Discharge Detection Elimination (IDDE)	22
Calhoun County Environment and Enforcement Office.....	22
Illicit Discharge Ordinance	23
Stormwater Outfall Reconnaissance	24
Illicit Discharge Reporting Form	24
Other IDDE Initiatives.....	25
3.4 Construction Site Storm Water Runoff Control	25
Erosion and Sediment Control Plan Review Procedures and Permitting Process	26
Procedures for Notifying ADEM of Non-Compliant Sites	29



2016 Calhoun County Storm Water Management Report

3.5 Post Construction Site Storm Water Runoff Control.....29

 Non-Structural BMPs30

 Structural BMPs31

3.6 Pollution Prevention and Good Housekeeping for Municipal/County Operations32

 Stormwater Management Training.....33

 Certified Pesticide Applicators33

Appendix.....35



2016 Calhoun County Storm Water Management Report

1. Certification

I certify under penalty of law that this document and all attachments were prepared under my direction or supervision in accordance with a system designed to assure that qualified personnel properly gather and evaluate the information submitted. Base on my inquiry of the person or persons who manage the system, or those persons directly responsible for gathering the information, the information is, to the best of my knowledge and belief, true, accurate, and complete. I am aware that there are significant penalties for submitting false information, including the possibility of fine and imprisonment for knowing violations.

Name

Mr. Brian Rosenbalm,

Title

County Engineer

Signature

_____ 2017
Date



2. Introduction:

On November 16, 1990, the U.S. Environmental Protection Agency (EPA) promulgated regulations, under the Water Quality Act of 1987, setting forth application requirements for National Pollutant Discharge Elimination System (NPDES) storm water permits.

In 1999, EPA promulgated regulations establishing Phase II of the NPDES storm water program. The Phase II program extends coverage of the NPDES storm water program to regulated “small” MS4s. A regulated “small” MS4 is located within an “urbanized area” as defined by the Census Bureau or as designated by the NPDES permitting authority.

The Alabama Department of Environmental Management (ADEM) administers the storm water program for the State of Alabama. In 2014 Calhoun County submitted a revised Storm Water Management Program Plan and Implementation Schedule to the ADEM. The information included in this Storm Water Management Program (SWMP) Plan was revised to update changes and the revised scheduling of a number of aspects of the 2014 Plan. The County’s SWMP Plan describes how the County will work to maintain compliance with the NPDES General Permit ALR040004. The plan will be further revised and updated as needed to reflect the county’s MS4 activities.

During the 2016 reporting period the county used the revised 2014 Plan to guide the implementation of activities to fulfill the provisions of the SWMP Plan. Since 2014, Mr. Chris Gann provided program oversight and planning of activities of SWMP Plan. The County Commission’s ability to fund the county’s MS4 activities and provide oversight and were governed by the 2016 Commission’s budget and available funds.

This 2016 report documents the results of the SWMP for the Municipal Separate Storm Sewer System (MS4), Phase II General Permit for the Calhoun County urbanized area. The original permit was jointly issued for Calhoun County, and includes the City of Anniston, the City of Jacksonville and the City of Oxford. Calhoun County is submitting a standalone 2016 report documenting the activities which took place within the unincorporated urbanized area of the county lying outside the jurisdiction of the cities listed above. Some of the activities were conducted in conjunction with the above mentioned municipalities. It is understood that the cities of Anniston, Oxford and Jacksonville will file reports for each individual municipality. This permit, with the designated NPDES number ALR040004 became effective February 1, 2011. The SWMP according to Part IIIA of the general permit is to reduce the discharge of pollutants from the county’s MS4 to the maximum extent practicable.

The County Commission and the major cities within the county made efforts during the 2016 period, combining their assets and resources in a number of areas to achieve the scheduling and best management practices set out in the various SWMP Plans. The County has particularly focused a



2016 Calhoun County Storm Water Management Report

portion of its efforts on the unincorporated, urbanized area outside those portions of the county which are the jurisdiction of its city municipalities.

Outlined in this report are those actions and methods the County has used to address specific areas under the Plan during 2016. The six minimum control measures that are required by the permit to reduce the discharge of pollutants to comply with the Clean Water Act are: **(1) Public Education and Public Involvement on Storm Water Impacts; (2) Illicit Discharge Detection and Elimination (IDDE) Program; (3) Construction Site Storm Water Runoff Control; (4) Post Construction Storm Water Management in New Development and Redevelopment and; (5) Pollution Prevention/Good Housekeeping for Municipal Operations.** The details of these measures can be found in Part IIIB of the permit (see **Appendix**).

2.1 Location

Calhoun County is located mainly north of Interstate 20 and southeast Interstate 59. Birmingham lies approximately 50 miles to the west and Atlanta is 80 miles to the east. The population of Calhoun County is approximately 117,000 according to the 2013 census. Significant urbanized areas within the county are the cities of Anniston, Jacksonville, and Oxford.



2016 Calhoun County Storm Water Management Report



Map of Calhoun County

2.2 Responsible Party

The Calhoun County Commission is the responsible entity for the MS4 program for the urbanized areas outside the City's jurisdictions. Mr. Chris Gann administers the MS4 program for the Calhoun County Commission and began work in August, 2014. Mr. Gann has the responsibility of oversight of the SWMP and compliance with Phase II Storm Water Permit. Various departments and individuals working within the county share and assist in the responsibility for public involvement and participation, residential and commercial construction and conducting the erosion and sediment control inspections. Calhoun County has established a baseline of water quality from previous stormwater sampling events; the County has public education and outreach programs; and assisted the various partner organizations and municipalities with other outreach programs. The following individuals should be contacted to address questions or concerns regarding the county's MS4 program.



2016 Calhoun County Storm Water Management Report

Commission District 1

Commissioner Fred Wilson

Commission District 2

Commissioner Tim Hodges

Commission District 3

Commissioner Don Hudson

Commission District 4

Commissioner John "JD" Hess

Commission District 5

Commissioner Lee Patterson

Commission Office

1702 Noble Street

Suite 103

Anniston, AL 36201

Phone: 256-241-2800

ccc@calhouncounty.org

Mr. Chris Gann

160 Seaton Drive

Anniston, AL 36205

Phone: 256-237-4657

Fax: 256-237-2009

Mr. Randy Hubbard

Sub Division Inspections



3.0 Storm Water Management Program Requirements

The County submitted its Storm Water Management Program Plan for the NPDES Permit ALR040004 in 2011 and updated the Plan in 2013 and revised the plan in 2014. The MS4 NPDES Permit for the county is to be renewed in 2016. The County is committed in achieving the conditions of the permit, which will provide improved water quality through the reduction of pollutants in stormwater discharged to the waters of the State. The County has committed personnel and financial resources to support the execution of the plan. As stated above there are six minimum control measures which the county must address in its Storm Water Management Program plan are:

- 1. Public Education and Public Involvement on Storm Water Impacts**
- 2. Illicit Discharge Detection and Elimination (IDDE) Program**
- 3. Construction Site Storm Water Runoff Control**
- 4. Post-Construction Storm Water Management in New Development and Redevelopment**
- 5. Pollution Prevention/Good Housekeeping for Municipal Operations**

3.1 Public Education and Public Involvement on Storm Water Impacts

Calhoun County's general population continues to participate in various educational and outreach activities sponsored by the county and the population centers in the county. The various activities will continue to educate both the adult and school age population about the various activities and human actions which negatively impact water bodies in the county. Calhoun County is therefore committed to continuing to provide information and educating the general public, businesses and the municipal employees of the importance of the measures to be taken to reduce pollution of storm water. The county developed a number of BMPs that were used during the 2016 reporting period to educate the general public, businesses, homeowners, landscapers, contractors, developers, municipal staff and others.

Television

The county in the past has utilized television for fact distribution to the public. The County did not conduct PSAs on the local television channel (TV-24) in Anniston, Alabama. Mr. Gann and the Commission are reviewing future use of the television media as part of the MS4 program for Calhoun County.

Newspaper

The County continues to utilize its Free Dump Day to encourage residents to clean up and dispose of debris which would otherwise contribute to an illicit discharge situation. The County notified citizens using the landfill of the proposed Free Dump Day. Records of the disposal quantities are kept at the landfill. The Event is held quarterly, (1-17-2016, 4-18-2016, 7-18-2016 and 10-17-2016).



Storm Water Webpage

Storm water information is provided on the county's webpage. Citizens often go to the Calhoun County website to obtain information on items of community interest. The website is accessible 24 hours a day and serves the citizens that can't meet with the county's staff during normal working hours. The county uses a portion of its webpage to deliver messages about the county's storm water program. The information is under the County Home Page and Highway Department's tab. (<http://www.calhouncounty.org/highway/stormmain.html>). An Example of the Webpage is presented in the Appendix.

There are some useful links on the page pertaining to the County's MS4 program:

Calhoun County Storm Water Plan (*Adobe pdf document*)
<http://www.calhouncounty.org/highway/stormplan.pdf>

Phase II Information - <http://www.calhouncounty.org/highway/stormphase2.html>

Urbanized map for Calhoun County (*Adobe pdf document*)
<http://www.calhouncounty.org/highway/stormphase2.html>

Alabama Low Impact Development Handbook - <http://www.aces.edu/natural-resources/water-resources/watershed-planning/stormwater-management/LID.php>

Alabama Handbook for Erosion Control, Sediment Control and Stormwater Management on Construction Sites and Urban Areas - http://swcc.alabama.gov/pages/erosion_handbook.aspx

Calhoun County continues to use the webpage to deliver important information concerning the county's SWMP during 2016 and the future. The webpage will inform the public of information pertaining to storm water policies; updated storm water sample data, links to design manuals and links to storm water related sites will be available to the public. The County will continue to update the Phase II Stormwater webpage to provide new or updated information of interest concerning stormwater related issues within the county. The Phase II Stormwater webpage reaches a general public target audience. A link to the 2016 Stormwater Management Plan and the 2017 Storm Water Management Report will be added to the Webpage.

Earth Day Activities

Earth Day is a great event in the county. The County Commission has created and continues to utilize environmental activities and events aimed at educating citizens of all ages on the importance of protecting our environment. An example of this type of event is Calhoun County Earth Day Celebration 2016. This event was sponsored in part by the Alabama County Extension Service and targets the participants with information on a variety of topics including stormwater management techniques, policies and practices within the county. The county will continue to provide Earth Day



activities throughout the permit cycle and into 2016. Earth Day activities primarily reach a general public and school children target audience.

Public Presentations

During the 2016 reporting period, the Alabama County Extension Service (ACES) sponsored/assisted with a number of programs for the general public in which portions dealt with stormwater runoff and pollution. The County Extension Service provided education and outreach to several thousand adults and children during various programs, festivals, and training sessions throughout the county. Water quality and the environment are a recurring theme that the ACES includes in many of the programs and training which they offer. An abbreviated (edited) list of some of the programs and the attendance numbers which included educational information which also included stormwater related topics was provided Dr. David West and Ms. Lisa Sosebee with the Calhoun County Extension Service and is presented in the **Appendix**.



CAMP CANE CREEK
JUNE 19-23 & 26-30
JULY 10-14 & 17-21
CALL THE EXTENSION
OFFICE FOR INFO. 256-237-1621

"MY BOYS LOVE THIS CAMP! WE'VE DONE THIS SEVERAL YEARS AND THEY LOOK FORWARD TO IT EVERY SUMMER. I WANTED THEM TO EXPERIENCE THE SUMMER MONTHS OUTSIDE LIKE WE USED TO. THEY EXPLORE THEIR SURROUNDINGS, LEARN HOW TO WEED, PLANT, AND FERTILIZE PLANTS. THEY MAKE COMPOST AND INTERACT WITH SOME NEAT ANIMALS! I HIGHLY RECOMMEND THIS CAMP!!"

The graphic features three photographs: a cleanup scene in a wooded area, a group of children sitting on a bench, and a group of children working in a garden. The text is overlaid on a dark background in the top section and a green background in the bottom section.

Camp Cane Creek





Earth Day Celebration-2016

The Alabama County Extension Service for Calhoun County provided an invaluable resource during the 2016 reporting period. Dr. David West and his staff will be counted on in 2017 to provide awareness training and classes which will help keep the general public informed of the water quality issues in the county.

Additional public presentations, workshops and seminars were conducted in Calhoun County which presented important information concerning topics pertaining to stormwater, pollution and the importance of a healthy watershed. Stormwater awareness and water quality were presented in a number of forums by environmentally conscious organizations working in the county. The target audience for public presentations varied depending upon the organization participating in the event. Target audiences for presentations could include schools, environmental stakeholder groups, local civic groups and homeowners. Examples of the organizations include:



2016 Calhoun County Storm Water Management Report
**Choccolocco Creek Watershed Alliance; Watershed Workshop and the Renew our Rivers
Rain Barrel Workshops; Camp Cane Creek
Fall Fest
4H Club; Earth Day,
Cane Creek Community Garden
Alabama Clean Water Partnership
Calhoun County Master Gardener Work Days**

Workshops (Public and County Staff)

In order to provide training for its county staff, Calhoun County conducted a training session at the Calhoun County Highway Department facility on 160 Seaton Drive on January 14, 2017. The presentation, "IDDE; A Grate Concern", explains some of the issues and problems faced by the county in dealing with illicit discharges to stormwater and how county staff can assist in meeting the requirements of the permit. The County's goal is to use its quarterly staff meetings during 2016 as an opportunity to educate and update its staff on the methods and techniques which can be used to implement the county's stormwater plan in conjunction with the services it provides. Attendance records are presented in the **Appendix**.

The training program was attended by more than 40 of the county's staff during 2016. Documentation for the training sessions is presented in the **Appendix**. During 2016, the County Commission will continue to work with its employees during regularly scheduled meetings and as the budget allows.

Measure of Success

Overall success of our public education and outreach program is gauged by the awareness of the public and the general water quality in our lakes and streams. The water quality is in turn gauged by the results from our water quality monitoring program. The county is reviewing its options concerning dry weather sampling points within the county as a means to evaluate the effectiveness of the MS4 program. The comparison of historic and recent sampling will provide a measure of the success of the County's efforts.

The level of awareness in the community, regarding the county's stormwater management program, is being evaluated through the use of a survey circulated to the public at various locations in the county. Specific components and measureable goals within the public education and outreach portions of the program will be reviewed and evaluated as to effectiveness and recommendations will be made to update the County's evolving SWMP Plan. The County is considering the use of a survey to gauge the public's understanding of the County's MS4 program. The County used a survey in 2016 with limited success on getting them returned. Revised questionnaires will be distributed during 2017 events and programs to gauge the public's awareness of the MS4 program, evaluate the program's effectiveness and areas where the plan can be improved.



3.2 Public Involvement and Participation

The public involvement and participation control measures along with public education and outreach are dependent on each other for their success; it is difficult to determine which is more critical. The county believes that educating and informing the public will be the cornerstone of the SWMP and make it a success while public involvement and participation in the program will be the mortar that holds these two together. The county is aware that making available the information concerning the importance of managing storm water pollution is paramount in attracting the public's attention and interest in participating in the county's MS4 program.

During 2016, Calhoun County along with representatives from the City of Anniston, City of Jacksonville, and the City of Oxford met on several occasions as part of the Calhoun County Stormwater Cooperative. The group also The Cooperative will continue to meet during 2017 to discuss stormwater related issues which mutually concern those areas of the county covered by the MS4 permit. Early in 2016, the Cooperative procured 2 pet waste stations to be placed at the Oxford Lake Park, which is one of the busiest parks in Calhoun County. The Cooperative also joined the Clean Water Future on April 4, 2016 in hopes of gaining access to a wider range of educational materials for the future (www.cleanwaterfuture.com). Late in 2016 the Cooperative lost half of the members due to budget cuts, relocations, and other unforeseen circumstances. In early 2017 the group reconvened with new members and a reinvigorated attitude. Agendas, meeting minutes and sign-up sheets from the meetings are presented in the **Appendix**.

A Stormwater Citizens Advisory Committee was formed during September 2014. The Calhoun Stormwater Cooperative continues to meet with the Citizens Advisory Committee which is part of the East Alabama Planning Commission the parties formed a Stormwater Citizens Advisory Committee. Documents pertaining to the meetings and attendance are presented in the **Appendix**.

A listing of the County's Public Education Activities and Public Involvement Activities held during the 2016 reporting period is presented in the **Appendix** followed by examples of the meeting minutes of the various groups. As part of the 2016 reporting period the county will continue to actively partner with the cities of Jacksonville, Oxford, Anniston and Jacksonville State University whenever possible to share the limited resources and advance this control measure.

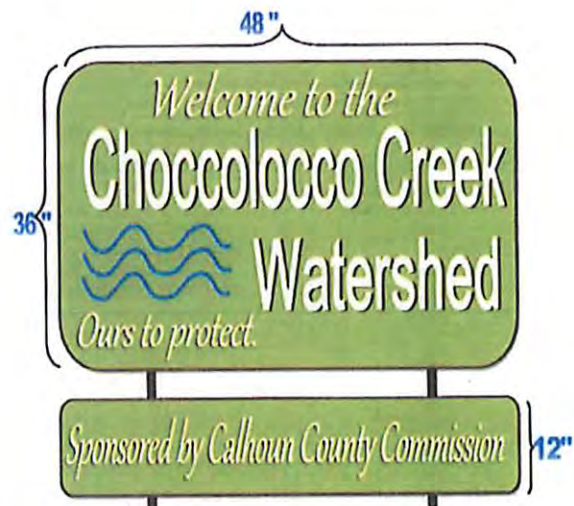
Involvement of General Public, Civic Organizations, Clubs and Associations

The county participated in a number of activities with several civic organizations to advance the county's public education and public involvement efforts with the various groups targeted by the MS4 Program in the county. Several organizations were involved with both the education measures and pressing their membership to become involved in a number of the activities in the county. These groups participated in several of the programs which were also sponsored by the Calhoun County Extension Service and its workshops and training sessions, portions of which dealt with stormwater



2016 Calhoun County Storm Water Management Report
issues. In 2016, the county partnered with the Choccolocco Creek Watershed Alliance to place several signs throughout the county. The County and the Choccolocco Creek Watershed Alliance placed these signs in hopes that the citizens and tourist in Calhoun County will be reminded of our obligation to protect our local watersheds from pollutants.

Choccolocco Creek Watershed Alliance
Calhoun County Master Gardener Program
Fall Fest
4H Club
Alabama Clean Water Partnership
Calhoun County Stormwater Cooperative
Stormwater Citizens Advisory Committee



Choccolocco Creek Watershed Alliance

In 2017, the county has plans to continue to reach out to these stakeholder organizations to increase the awareness of how to participate in preventing storm water pollution within the county. These organizations have a vested interest in preserving the water quality of Calhoun County and will be pursued to work with and participate in the county's MS4 program. The county will continue to participate in, support, and work closely with, these organizations. These organizations have core values of preserving the watersheds and have the potential to reach large portions of the Plan's target audiences.

Free Landfill Day Program

The County has a Free Landfill Day to encourage residents to properly dispose of debris properly. The free landfill day involves the general public and encourages the public to take an interest and in becoming more knowledgeable concerning the county's needs to prevent stormwater pollution. The county encourages the residents to participate in removing litter and debris which potentially will



reach the watersheds within the county. The general public is encouraged to bring materials collected within the county to the landfill and properly dispose of the materials free of charge. During the four (4) free landfill days of 2016 nearly 1700 vehicles brought litter and debris to the landfill. The county has also begun to utilize the webpage to advertise these days in hopes to keep as much debris and litter out of our stormwater systems and watersheds.



Home	Offices	Government	Employment	Links
------	---------	------------	------------	-------

Home | County Landfill and Transfer Station | Free Day

- [Directions](#)
- [Scale-House](#)
- [Transfer Station](#)
- [C/D Landfill](#)
- [Free Day](#)
- [Costs & Payments](#)
- [Forms](#)
- [Department Home](#)



Calhoun County Landfill
 3625 Moravia Road
 Anniston, AL 36201
 Phone: 256-236-2411
 Fax: 256-241-2098
landfill@calhouncounty.org

Mailing address:
 1702 Noble Street
 Suite 103
 Anniston, AL 36201

Free Day

Calhoun County Landfill Open House

Sponsored by your Calhoun County Commissioners

- Fred Wilson, District 1
- Tim Hodges, District 2
- Don Hudson, District 3
- J.D. Hess, District 4
- Lee Patterson, District 5

OPEN TO ALL FAMILIES OF CALHOUN COUNTY
 RECYCLE AREAS SET UP FOR THE FOLLOWING



Scrap Metal
 Used Motor Oil
 Car Batteries



FREE DISPOSAL FOR:
 Appliances ~ Yard Waste ~ Shingles
 Scrap Metal ~ Carpet ~ Remodeling Waste

Please Separate Types of Waste to Unload Quickly

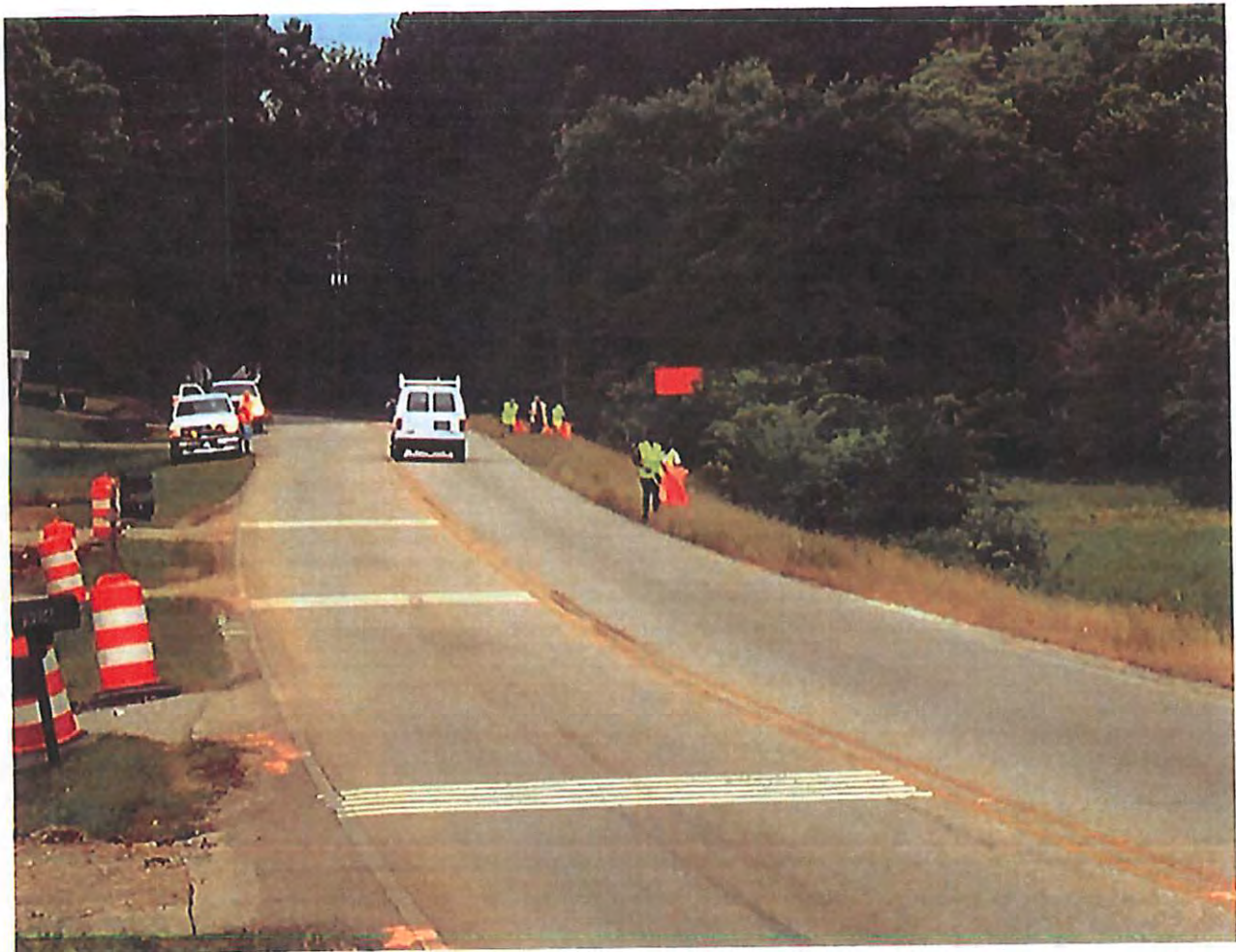
There Will Be A CHARGE For Household Garbage & Tires

For 2017:
January 21, 2017
April 22, 2017
July 15, 2017
October 21, 2017



County Litter Patrol Program

In addition to the Free Days at the Calhoun County Landfill, the Calhoun County Commission has a regular Litter Patrol to remove debris and limb and leaf material from the ditches which could ultimately make its way into the county surface water bodies. The county sends litter patrol crews out daily and collects an average of 8-10 tons of debris each month.



Calhoun County Litter Patrol

PH: 256-241-2942 or FAX 256-231-1747



Calhoun County Recycling Program

In 2016, the Calhoun County Recycling Program took in and recycled a total of 545 tons or 1,090,000 lbs of material. There are currently 5 drop off centers throughout the county. Yearly totals can found on the website at: <http://www.calhouncounty.org/recycle/yearlytotals.html>

A copy of the webpage and the drop off center locations are included in the Appendix.



Calhoun County Recycling Program

PH: 256-241-2942 or FAX 256-231-1747



Storm Drain Marking Program

In 2014, the County paid to have several metal “Drains To River” marking templates for storm drain and outfall identification and have been used at some outfall locations. These stencils have proved a vital resource for the drain marking program in Calhoun County. These marking templates have been and will continue to be utilized as part of the county’s MS4 program in 2017.



Drain Marking Program

The county’s GIS staff (Robert Sheitlin) has the county’s watershed and outfalls input on the mapping system for the county. The County Outfall Map continues to be updated for the public and will be linked to the Stormwater Webpage when completed. A copy of the current map available from the County GIS Department and the County Highway Department. The map provides county staff access to the water shed drainage patterns and associated outfalls. As part of the county’s 2016 MS4 program, the county continues to update the map and will continue with its Drain Marking and Warning Sign program along the drainage ways and outfalls in the county. The program will inform the public of the potential consequences of dumping near the outfall areas.



2016 Calhoun County Storm Water Management Report



The county plans to continue the marking and mapping program as part of its efforts to inform the public. The outfall map will allow environmental groups active in the county to assist with the collection of debris which could affect the county's various watersheds. The county will continue in 2017 to work with organizations and groups identified in the county to assist with an annual Clean-Up drives and projects.



Civic Group Involvement

The county continues to try to provide opportunities for civic groups to get involved with the MS4 program. At this time the county relies on partnerships with the Choccolocco Creek Watershed Alliance and the Alabama Clean Water Partnership for the man power, while the county provides the resources like trash bags, vests, etc to make these litter cleanups happen



Civic Group Litter Cleanup

Webpage

The county continues its efforts to provide the general public with an additional means of reporting potential storm water concerns and access information on the MS4 program, the county provides contact information on its webpage. Citizens can find contact information to comment on the current storm water program, information on methods for identifying suspected illicit discharges, registering a complaint of suspected illicit discharge or the methods for providing recommendations for improvements to the existing plan. Any information received is forwarded to the Storm Water Manager and an investigation is initiated when appropriate. The webpage information is a valuable tool for assisting county personnel in responding to citizen concerns. The website is available and is primarily for engaging the general public target audience.





Home	Offices	Government	Employment	Links
------	---------	------------	------------	-------

Home | Highway Department | Storm Water

[About Us](#)

[Our New Location](#)

[Bridge Information](#)

[Road Information](#)

[Storm Water Info](#)

[FAQ](#)

[Forms and Maps](#)

[Department Home](#)



OTHER RESOURCES
[Alabama DOT](#)
[US DOT](#)

Calhoun County Highway
Department
165 Sexton Drive
Anniston, AL 36205
Phone: 256-237-4657
highway@calhouncounty.org

Calhoun County Storm Water Information

Calhoun County is designated by the United States Environmental Protection Agency (USEPA) and the Alabama Department of Environmental Management (ADEM) as an owner/operator of a Phase II municipal separate storm sewer system (MS4). The USEPA's Phase II Stormwater Regulations, which were implemented in March 2003, require operators of regulated Phase II MS4s to obtain a National Pollutant Discharge Elimination System (NPDES) permit and to develop a stormwater management program designed to protect water quality and to prevent harmful pollutants in stormwater runoff from being washed into the MS4. The County received its current Phase II Stormwater NPDES permit (ALR040004) on October 1, 2016. The current permit coverage will expire on October 31, 2021.

The intent of the Phase II regulations is to reduce the adverse impacts to water quality and aquatic habitat by instituting the use of controls on the unregulated sources of stormwater discharges. In order to comply with these regulations Calhoun County must satisfy six "minimum control measures," including:

- Public Education and Outreach
- Public Participation/Involvement
- Illicit Discharge Detection and Elimination
- Construction Site Runoff Control
- Post-Construction Stormwater Management
- Pollution Prevention/Good Housekeeping

Useful Links

[Calhoun County Storm Water Plan](#) (Adobe pdf document)

[2015 Storm Water Management Program Report](#) (Large Adobe pdf document)

[2014 Storm Water Management Program Report](#) (Large Adobe pdf document)

Phase II Information

[Urbanized map for Calhoun County](#) (Adobe pdf document)

[Alabama Low Impact Development Handbook](#)

[Alabama Handbook for Erosion Control, Sediment Control and Stormwater Management on Construction Sites and Urban Areas](#)

Who do I contact with a storm water concern?

Please contact Chris Gann, Assistant County Engineer at (256) 237-4657.

[About Us](#) | [Privacy Policy](#) | [Contact Us](#) | ©2016 Calhoun County Alabama

Calhoun County Webpage Information



3.3 Illicit Discharge Detection Elimination (IDDE)

The **Calhoun County Environment and Enforcement Office** was established on January 1, 2000 by the Calhoun County Commission. The initial purpose for establishing this office was to provide Calhoun County with a work force “Litter Control” to remove unsightly litter, and illegal dumps from the county highways, byways, and public areas. Over the years, the office has expanded its duties into areas similar to that of code enforcement seen in other counties. The office is responsible for Environmental Enforcement regarding Alabama’s Solid Waste Laws, Criminal littering, Calhoun County’s “Public Nuisance Law”, Mosquito Control, and the processing and assignment of Court Ordered Community Service. The County Commission is utilizing the Enforcement Office in cooperation with Stormwater Manager to monitor illicit discharges within the county. An example of the current actions taken during 2016 is presented below. Pictured below is an abandoned lot in which the Environmental and Enforcement office evaluated and determined the lot was public nuisance. The lot was then cleaned up by a contractor for the County’s Environmental Department.



Illicit Discharge, Detection and Elimination

The county’s illicit discharge detection and elimination (IDDE) program is coordinated by the Stormwater Manager to actively locate, identify and correct illicit discharges to the MS4 during the permit cycle. During 2016, the County Highway Department’s staff received training for Illicit Discharge, Detection and Elimination as part of a Safety and training meeting held in January 14, 2016. The county will continue to update and train staff in IDDE during the permit period. The county continues to manage, enforce and expand its IDDE program where possible and utilize local and state agencies to enforce illicit discharges where practicable.





Illicit Discharge, Detection and Elimination

The County has two Standard Operating Procedures dealing with IDDE. SOP#-ID-1 and SOP#-ID-2. The SOPs deal with the identification of outfall IDDE and Construction site IDDE. The SOPs are attached in the Appendix along with Inspection Sheets and Reporting Forms.

The overall success of the county's IDDE program will ultimately be gauged by having accurate an updated storm sewer system drainage maps, the reduction of illicit discharges, and the level of public awareness of the importance of reporting illicit discharges. Specific components and measureable goals within the county's IDDE program will consist of following the best management practices (BMPs).

Illicit Discharge Ordinance

Section 3(B), Paragraph 3(a)(iii) of the NPDES General Permit Number ALR04004 states "To the extent allowable under State and local law, effectively prohibit, through ordinance, or other regulatory mechanism, non-stormwater discharges into your storm sewer system and implement appropriate enforcement procedures and actions."



2016 Calhoun County Storm Water Management Report

The county has no authority to implement an ordinance to enforce through law the Illicit Discharge of Material into the county's MS4. Therefore the county will use whatever means necessary to monitor and document the illicit discharge and report illicit discharges to the Calhoun County Environmental Enforcement Office and ADEM for follow up actions as necessary.

As described previously the county has in place SOPs for identifying and reporting illicit discharges and will continue its efforts to identify and act on reported illicit discharges. The Storm Water Manager will notify the affected municipalities where appropriate and follow up with notification of the State where further action is needed. The County Storm Water Manager will prepare a follow up report of the actions taken based on the reported information (see **Appendix**).

Stormwater Outfall Reconnaissance

The Stormwater manager implemented a new tactic for the Stormwater Outfall Reconnaissance in 2016. The County began using its Bridge Inspection Team to perform the Stormwater Outfall Reconnaissance. The bridge inspection team inspected 195 bridges in 2016. This is a representative sample of an average inspection year for the bridge inspection team. If there are any issues at the outfall, the bridge inspection team reports them directly to the manager. The list of bridges and their locations are provided in the **Appendix**

Illicit Discharge Reporting Form

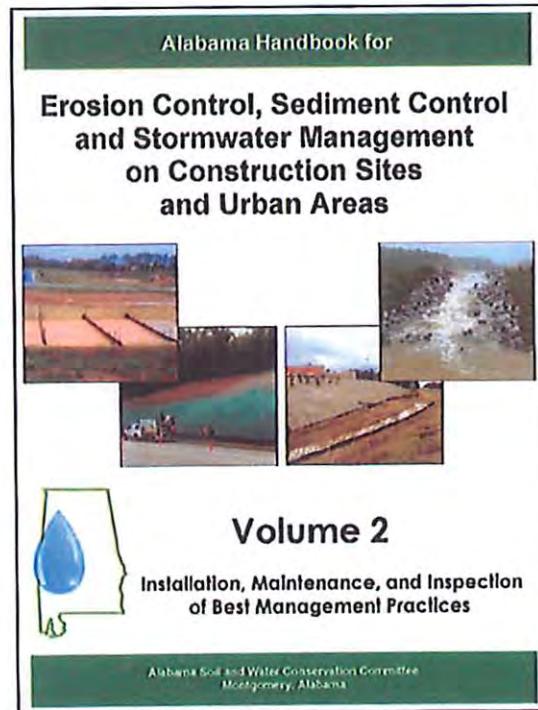
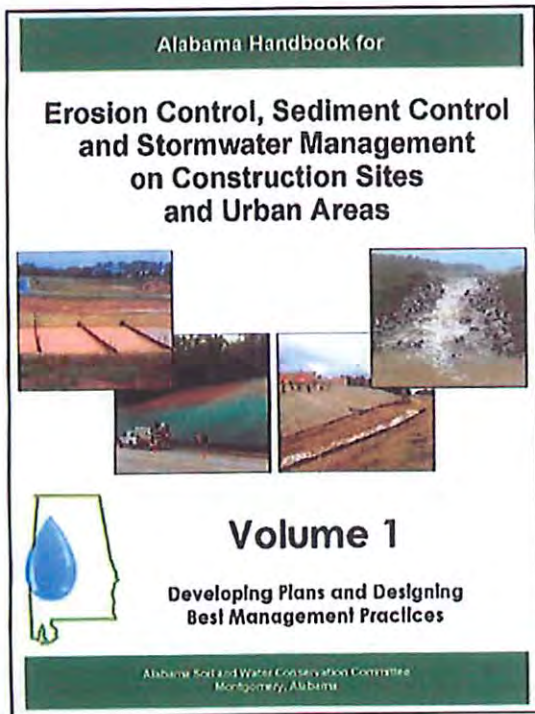
In 2016, the Storm Water Manager continue to develop an illicit discharge reporting form that residents can download complete and then e-mail back to the Stormwater Manager upon discovering a potential illicit discharge. The County expects to have the reporting form available for 24-hour access through the county's webpage by the end of the 2017. This form will assist the county in tracking and responding to illicit discharges and will continue to be used for reporting illicit discharge issues in the future. The Illicit Discharge Reporting Form is applicable to all target audiences. Currently the Storm Water Manager tracks the IDDE cases in records at the Calhoun County Highway Department (Example, **Appendix**)



Other IDDE Initiatives

The county will continue to actively pursue new and innovative programs to help eliminate illicit discharges and will work to implement programs that are likely to be successful in the community. In the past the county has conducted limited stormwater sampling at randomly selected outfall points which can be used to target discharge locations and will continue this practice at times in the future to gauge the effectiveness of the program.

3.4 Construction Site Storm Water Runoff Control



Alabama Handbook for Erosion Control, Sediment Control and Stormwater Management on Construction Sites and Urban Areas -

http://swcc.alabama.gov/pages/erosion_handbook.aspx

ADEM Administrative Code 335-6-12 implements a state-wide construction storm water regulatory program consistent with the NPDES requirements for construction storm water control.

The County's construction site storm water runoff control program is used to effectively manage construction site storm water. The county's Storm Water Manager continues to manage and enforce its construction site storm water runoff control program during this permit cycle. Overall management and implementation of the county's storm water construction site storm water runoff control program is the responsibility of the County's Building Inspector.



2016 Calhoun County Storm Water Management Report

The county uses Qualified Credentialed Inspectors (QCI) as part of the municipal and county departments for construction area inspections that qualify under the stormwater regulations. Annual training is required to maintain good standing as a QCI. During 2016 the following inspectors received QCI Refresher Training:

Jeff Clendening
Chris Gann
Randy Hubbard
Rodney McCain
Brian Rosenbalm
Joel Thrash
Michael Hosch

Documentation for the training is on file in the Calhoun County Highway Department.

The county will continue to hold annual workshops for refresher training, copies of the completed QCI forms are on file at the Calhoun County Highway Department.

Erosion and Sediment Control Plan Review Procedures and Permitting Process

Plan review procedures, as well as the construction site permitting process, for developments in the county are outlined in the Alabama Handbook for Erosion Control, Sediment Control and Stormwater Management on Construction Sites and Urban Areas (Alabama Handbook). The Handbook is available at the County's Engineering Department. Access to the two volumes is also available at the Soil & Water Conservation Committee website at:

http://swcc.alabama.gov/pages/erosion_handbook.aspx

and on the County webpage:

<http://www.calhouncounty.org/highway/stormwater.html>

The county has standardized on the use of the Alabama Handbook for the design, construction and installation of proper erosion and sediment control best management practices on developments within the County. Developers, Contractors and Engineers operating within Calhoun County are required to utilize the practices in the Handbook to manage stormwater at construction sites. Additional information is also provided in Alabama County Extension Service ACES, Alabama Low Impact Development Handbook:

<http://www.aces.edu/natural-resources/water-resources/watershed-planning/stormwater-management/LID.php>

See Appendix.

Procedures for Notifying ADEM of Non-Compliant Sites

As part of the county's enforcement procedures, the county will notify ADEM, either by phone or email, of any construction sites where a possible violation of the Clean Water Act has occurred. Possible violations could include, but are not limited to: releases of sediment to a Water of the



2016 Calhoun County Storm Water Management Report

State/U.S. and/or failure to adhere to the county's corrective action request following an inspection. Presented below are the forms under consideration for inspection and reporting:

BMP INSPECTION REPORT

Client _____ Project name _____ and Reg. no. _____

Inspected By _____ Date and Time _____ Page _____ of _____

A. Phase of Development: Initial Site Grading Building and Construction Punch List

B. <u>BMPs Applied</u> (check all that apply)	<u>Condition of BMPs (check one)</u>			<u>Comments</u>
	<u>Good</u>	<u>Fair</u>	<u>Poor</u>	
<input type="checkbox"/> Construction Exit	_____	_____	_____	
<input type="checkbox"/> Barrier-Class <input type="checkbox"/> Silt Fence	_____	_____	_____	
<input type="checkbox"/> Check Dams	_____	_____	_____	
<input type="checkbox"/> Diversion	_____	_____	_____	
<input type="checkbox"/> Grass Swale	_____	_____	_____	
<input type="checkbox"/> Inlet Protection	_____	_____	_____	
<input type="checkbox"/> Outlet Protection	_____	_____	_____	
<input type="checkbox"/> Sediment Basin	_____	_____	_____	
<input type="checkbox"/> Temporary Seeding	_____	_____	_____	
<input type="checkbox"/> Permanent Seeding	_____	_____	_____	
<input type="checkbox"/> Groundskeeping	_____	_____	_____	

C. Additional BMPs needed (potential practice and location):

D. Additional Comments:

E. Sampling. Instream sampling necessary to evaluate the effectiveness of BMP implementation based on evaluation of qualified credentialed professional. Yes No

F. Significant rainfall events since last inspection (date and amounts):

G. Inspection report reviewed with responsible owner/operator

Inspector _____ Date _____

Responsible owner/operator _____ Date _____

Figure 4-1 BMP Inspection Report Form



2016 Calhoun County Storm Water Management Report

ADEM FIELD OPERATIONS DIVISION – NPDES CONSTRUCTION, AND NONCOAL MINING LESS THAN 5 ACRES STORMWATER INSPECTION REPORT AND BMP CERTIFICATION

RESPOND WITH "N/A" AS APPROPRIATE. FORMS WITH INCOMPLETE OR INCORRECT ANSWERS, OR MISSING SIGNATURES WILL BE RETURNED AND MAY RESULT IN APPROPRIATE COMPLIANCE ACTION BY THE DEPARTMENT. IF SPACE IS INSUFFICIENT, CONTINUE ON AN ATTACHED SHEET(S) AS NECESSARY. PLEASE TYPE OR PRINT IN INK.
Complete this form, attach additional information as necessary, and send report to the nearest ADEM office

Item I.

Registrant Name		Facility/Site Name	
NPDES AL	County	Facility Contact and Title	
Facility Latitude & Longitude (decimal or deg.min,sec)		Facility Street Address or Location Description	
Township(s), Range(s), Section(s)		City	State Zip
Phone Number	Fax Number	E-Mail Address	

Item II.

List name of current ultimate receiving water(s) (indicate if through MS4) and the number of disturbed acres which drain through each treatment system or BMP.

Receiving Water	Disturbed Acres	Receiving Water	Disturbed Acres

Item III

Any Discharge Sampling Data Attached Any Instream Sampling Data Attached Any Photographs attached

Based on this site evaluation which a QCI, QCP, or a qualified person under the direct supervision of a QCP conducted, discharge and/or instream sampling is not necessary to properly evaluate the effectiveness of BMP implementation to ensure compliance with this registration. I understand that it is the responsibility of the registrant to know and effectively evaluate the quality of the stormwater being discharged. Lack of knowledge regarding the requirements of ADEM Administrative Code Chapter 335-6-12, stormwater discharge or instream water quality, shall not constitute a valid defense with regard to deficiencies in BMP implementation and maintenance, or negative impacts to water quality.

Item IV.

INSPECTION RESULTS (Describe current activities, deficiencies, proposed corrective action(s) and compliance schedule, etc.)

"Based upon the inspection of (date & time) _____ by the QCP, QCI, or a qualified person (list _____) under the direct supervision of the QCP identified below conducted, the QCI or QCP identified below certifies that effective structural and non-structural BMPs have been fully implemented and regularly maintained to the maximum extent practicable for the prevention and minimization of all sources of pollution in stormwater and authorized related process wastewater runoff, **except for those deficiencies noted above**, in accordance with the facility's CBMPP, good sediment, erosion, and other pollution control practices, and the requirements of ADEM Administrative Code Chapter 335-6-12. I certify that discharges have been tested or evaluated for the presence of non-stormwater and non-authorized process wastewaters. I certify under penalty of law that this document and all attachments were prepared under my direction or supervision in accordance with a system designed to assure that qualified personnel properly gather and evaluate the information submitted. Based on my inquiry of the person or persons who manage the system, or those persons directly responsible for gathering the information, the information submitted is, to the best of my knowledge and belief, true, accurate, and complete. I am aware that there are significant penalties for submitting false information, including the possibility of fines and imprisonment for knowing violations."

Name & Designation of QCI or QCP	Signature	Date
Name & Title of Registrant Responsible Official	Signature	Date

Figure 4-2 ADEM Form 500 1-03 FOD Stormwater Registration Inspection Report Page 1 of 1



Procedures for Receipt of Information Submitted by the Public

The county’s webpage provides contact information where the general public can provide information regarding potential erosion and sediment control concerns. The general public can also report potential concerns by contacting the County’s Storm Water Manager at the following address: Mr. Chris Gann, 160 Seaton Drive, Anniston, AL 36201 Phone: 256-237-4657 Fax: 256-237-2009. The county responds to each concern in a timely and efficient manner.

3.5 Post Construction Site Storm Water Management

The NPDES permit, ALR040004, states that the permit holders are to develop, implement and enforce a program to address storm water runoff from new and re-development projects that fall under any imposed ordinances or that qualify for permitting under ADEM storm water runoff for qualifying sites.



Watershed Management

The county utilizes and recommends the methods and designs from Alabama Handbook to control and improve post-construction stormwater runoff from new development and redevelopment during the permit cycle. Potential benefits of effectively controlling post-construction stormwater runoff include: water quality improvements, minimization of stream erosion and effective control of potential flooding impacts. The county encourages post-construction storm water management utilizing the methods laid out in the Alabama Handbook designed to address storm water pollution from nutrients, sediments and pathogens.

The strategy for the target audiences described above will vary depending on the type of audience and the potential risk and impact of pollutant contribution from post-construction storm water runoff. Overall management and implementation of the county’s post-construction storm water management program will be the responsibility of the county’s Storm Water Manager.



2016 Calhoun County Storm Water Management Report

Overall success of the post-construction storm water management program will primarily be gauged through water quality monitoring as well as visual observations of stream erosion and flooding impacts. The county emphasizes the use of specific components and measurable goals within our post-construction storm water management program. Current construction designs use well developed structural and non-structural controls to manage storm water at all qualifying construction sites for the duration of use for the particular piece of property. The particular controls designed for each construction site are maintained in order to restore runoff to the original or better quality of runoff before construction began to minimize volume and velocity of runoff to the highest extent practicable.

Non-Structural BMPs

Engineering Design and Construction Manuals

The county utilizes the Alabama Handbook in its construction projects and requires Developers, Contractors and Engineers to follow the guidelines of the Handbook. Web links to the manuals are listed on the county's website on the Stormwater tab. These methods are known to effectively address stormwater runoff. Using the Handbook identifies project requirements and specifications for new stormwater infrastructure.

The Storm Water Manager utilizes the Handbook which includes engineering design criteria for sewer and water infrastructure, as well as stormwater BMPs for water quality protection such as rain gardens and storm water wetlands.

The county will continue to use the Handbook as a guide for project design and construction of appropriate BMPs to effectively manage post-construction stormwater runoff during each permit cycle.

Conservation Subdivision Regulations

In place of amending the current subdivision regulations, the County Commission decided to require the developer's engineer certify the stormwater system was designed to withstand a minimum of a 2-yr 24-hr storm event. An example of a certification letter is provided in the **Appendix**.

The current regulations promote water resource protection through the setting aside of open space, concentrating development away from water resources and promoting low impact development concepts.

The County continues to promote the use of stormwater conservation in its subdivision guidelines. These conservation subdivision guidelines primarily affect a target audience that includes engineers, developers, contractors and homebuilders. Included in stormwater guidance documents being prepared by the county are the management practices and controls designed to achieve the runoff



2016 Calhoun County Storm Water Management Report
control goals that have been set.

The proposed guidelines include information on practices such as placement of drainage structures and establishment of permanent vegetation to assist in runoff management. Site approval and inspections processes are addressed in the guidance and inspection intervals are in line with minimum inspections as set forth through the ADEM's existing regulations and procedures. Tracking of all qualifying projects will be administered using the same GIS system used in the IDDE section control measure BMP. A scheduled annual review and evaluation of all sites will be conducted approximately one year after project completion.

Structural BMPs

Detention Pond Inspections

Projects undertaken by the county engineering staff and other department are rarely large enough to incorporate or utilize the design of a detention pond. On sites where there are existing detention ponds, periodic inspections to evaluate the maintenance and operation of these vital components of the county's drainage system, often identify potential problems. When needed the Storm Water Manager is tasked with performing annual inspections of all detention ponds (public and private) listed in the county's stormwater inventory. Upon inspection, the owner of the pond is notified of any corrective actions needed. Enforcement measures will be taken if the owner does not address the items listed in the report. The 2016 inspection reports are available at the Calhoun County Highway Department Offices.





Watershed Management

Design Guidelines for Structural BMPs

The county utilizes the Alabama Handbook as its guideline for the design, construction, installation and maintenance of stormwater BMPs. These guidelines primarily affect a target audience of engineers, developers and contractors.

Long-Term Maintenance of BMPs

Long-term maintenance of structural BMPs is a critical component to ensure that these BMPs continue to function as originally designed. The county will implement requirements for a maintenance agreement that ensures the long term maintenance of these structures.

The county continues to work on issuing updated standard agreements and other mechanisms as guidelines for developers, homeowner associations, and other groups which will ensure the long-term maintenance of structural BMPs.

3.6 Pollution Prevention and Good Housekeeping for Municipal/County Operations

The county has developed a program of education and training employees about spill prevention and storm water management and pollution prevention. This periodic training includes, storm water management, potential contaminant sources and best management practices as well as quick response techniques for releases of substances and materials that would be detrimental to the environment if released at one of its facilities. During the 2016 reporting period, county staff was provided training utilizing the instructional videos "Rain Check" and "IDDE".

The county's current program is intended to reduce storm water pollution and promote good housekeeping measures in municipal operations. The county continues to expand upon and will work to improve its training and education programs during each permit cycle. Potential benefits from an effective pollution prevention/good housekeeping program for municipal operations include:



2016 Calhoun County Storm Water Management Report

reduced storm water pollution from municipal operations and increased employee awareness regarding the effect of their daily activities on storm water management.

Stormwater Management Training

The county Staff attends and participates when possible, in a workshops and seminars where storm water/water quality related issues and information is provided. The Storm Water Manager attended training in Montgomery on January 15, 2016. Training provided information and resources utilized by the Storm Water Manager and other county departments on using methods for implementing site control measures on construction projects. County personnel also attend training opportunities including ADEM conferences and workshops, regional conferences and national conferences when available. County Staff attends conferences such as the 27th Annual Nonpoint Source Conference, held January 20th 2016 to stay current on stormwater management information.

County Staff receives updated information and reminders as part of their quarterly Safety and Information meetings. The staff is reminded of the importance of controlling stormwater run-off along county roads and the importance of spill cleanup at the county facilities. In the past the county has utilized a number of videos to make staff aware of the stormwater issues and will continue to use the aids as part of their training information.

The Storm Water Manager reviews the SPCC Plan with county's staff in conjunction with other scheduled meetings and training sessions. A number of informal workshops held during the year target county employees who deal with fuels and chemicals on a daily basis and provide basic information on the proper management, handling and disposal of potentially hazardous chemicals. The county will continue to create, offer and encourage storm water management training for county employees during the each permit cycle.

Certified Herbicide Applicators

The Calhoun County Highway Department maintains trained and certified personnel in the application of herbicides, including both restricted use and non-restricted use herbicides. Currently the County has 5 who are certified. See the list below:

Brian Conary
Lamar Murray
Jamie Bryant
Johnny Gann
Michael Hosch

County personnel attend various training events to maintain their certification. By obtaining certification, applicators become knowledgeable of the proper use and application of fertilizers and herbicides to maintain county right-of-ways. The staff uses the best management practices



2016 Calhoun County Storm Water Management Report

which are intended to reduce the need for herbicides, fertilizers and water. The county will continue to maintain personnel trained in the application of herbicides. Documentation of the staff training is available at the Calhoun County Highway Department.



APPENDIX



Certified and Registered Mail shall be addressed to:

Alabama Department of Environmental Management
Water Division
Storm Water Management Branch
1400 Coliseum Boulevard
Montgomery, Alabama 36110-2059

On or after December 21, 2020, all NOIs shall be made electronically in a prescribed manner acceptable to the Department.

PART III Storm Water Pollution Prevention and Management Program for Small MS4s

A. Storm Water Management Program (SWMP)

1. The Permittee is required to develop, revise, implement, maintain and enforce a storm water management program (SWMP) which shall include controls necessary to reduce the discharge of pollutants from its MS4 consistent with Section 402(p)(3)(B) of the Clean Water Act and 40 CFR Parts 122.30-122.37. These requirements shall be met by the development and implementation of a storm water management program plan (SWMPP) which addresses the best management practices (BMPs), control techniques and systems, design and engineering methods, public participation and education, monitoring, and other appropriate provisions designed to reduce the discharge of pollutants from the MS4 to the maximum extent practicable (MEP).
2. The Permittee shall provide and maintain adequate finance, staff, equipment, and support capabilities necessary to implement the SWMPP and comply with the requirements of this permit.
3. The SWMPP must address the minimum storm water control measures referenced in Part III.B. to include the following:
 - a. A map of the Permittee's MS4 urbanized areas;
 - b. The BMPs that will be implemented for each control measure. Low impact development/green infrastructure shall be considered where feasible. Information on LID/Green Infrastructure is available on the following websites: <http://www.adem.alabama.gov/programs/water/waterforms/LIDHandbook.pdf> and <http://epa.gov/pol/waste/green/index.cfm>.
 - c. The measureable goals for each of the minimum controls outlined in Part III.B.;
 - d. The proposed schedule—including interim milestones, as appropriate, inspections, and the frequency of actions needed to fully implement each minimum control; and
 - e. The person and/or persons responsible for implementing or coordination the BMPs for each separate minimum control measure.

4. Once the initial SWMPP is acknowledged by ADEM, activities and associated schedules outlined by the SWMPP or updates to the SWMPP are conditions of the permit.
5. Unless otherwise specified in this permit, the Permittee shall be in compliance with the conditions of this permit by the effective date of coverage.

B. Minimum Storm Water Control Measures

1. Public Education and Public Involvement on Storm Water Impacts

- a. The Permittee must develop and implement a public education and outreach program to inform the community about the impacts of storm water discharges on water bodies and the steps that the public can take to reduce pollutants in storm water runoff to the MEP. The Permittee shall continuously implement this program in the areas served by the MS4. The Permittee shall also comply, at a minimum, with applicable State and local public notice requirements when implementing a public involvement/participation program.
- b. The Permittee shall include within the SWMPP the methods for how it will:
 - i. Seek and consider public input in the development, revision, and implementation of the SWMPP;
 - ii. Identify targeted pollutant sources the Permittee's public education program is intended to address;
 - iii. Specifically address the reduction of litter, floatables and debris from entering the MS4, that may include, but is not limited to:
 1. Establishing a program to support volunteer groups for labeling storm drain inlets and catch basins with "no dumping" message; and
 2. Posting signs referencing local codes that prohibit littering and illegal dumping at selected designated public access points to open channels, creeks, and other relevant waterbodies;
 - iv. Inform and involve individuals and households about the steps they can take to reduce storm water pollution; and
 - v. Inform and involve individuals and groups on how to participate in the storm water program (with activities that may include, but not limited to, local stream and lake restoration activities, storm water stenciling, advisory councils, watershed associations, committees, participation on rate structures, stewardship programs and environmental related activities). The target audiences and subject areas for the education program that are likely to have significant storm water impacts should include, but is not limited to, the following:
 1. General Public
 - a. General impacts litter has on water bodies, how trash is delivered to streams via the MS4 and ways to reduce the litter;

- b. General impacts of storm water flows into surface water from impervious surface; and
 - c. Source control BMPs in areas of pet waste, vehicle maintenance, landscaping and rain water reuse.
 - 2. **General Public, Businesses, Including Home-Based and Mobile Businesses**
 - a. BMPs for use and storage of automotive chemicals, hazardous cleaning supplies, carwash soaps and other hazardous materials; and
 - b. Impacts of illicit discharges and how to report them.
 - 3. **Homeowners, Landscapers, and Property Managers**
 - a. Yard care techniques that protect water quality;
 - b. BMPs for use and storage of pesticides and fertilizers;
 - c. BMPs for carpet cleaning and auto repair and maintenance;
 - d. Runoff reduction techniques, which may include but not limited to site design, pervious paving, retention of forests, and mature trees; and
 - e. Storm water pond maintenance.
 - 4. **Engineers, Contractors, Developers, Review Staff and Land Use Planners**
 - a. Technical standards for construction site sediment and erosion control;
 - b. Storm water treatment and flow control BMPs;
 - c. Impacts of increased storm water flows into receiving water bodies; and
 - d. Run-off reduction techniques and low impact development (LID)/green infrastructure (GI) practices that may include, but not limited to, site design, pervious pavement, alternative parking lot design, retention of forests and mature trees to assist in storm water treatment and flow control BMPS.
 - vi. Evaluation of the effectiveness of the public education and public involvement program.
- c. The Permittee shall report each year in the annual report the following information:
 - i. A description of the activities used to involve groups and/or individuals in the development and implementation of the SWMPP;
 - ii. A description of the individuals and groups targeted and how many groups and/or individuals participated in the programs;
 - iii. A description of the activities used to address the reduction of litter, floatables and debris from entering the MS4 as required in Part III.B.1.b.iii.;

- iv. A description of the communication mechanisms or advertisements used to inform the public and the quantity that were distributed (i.e. number of printed brochures, copies of newspapers, workshops, public service announcements, etc); and
 - v. Results of the evaluation of the public education and public involvement program as required in Part III.B.1.b.vi.
- d. The Permittee shall make their SWMPP and their annual reports required under this permit available to the public when requested. The current SWMPP and the latest annual report should be posted on the Permittee's website, if available.

2. Illicit Discharge Detection and Elimination (IDDE) Program

- a. The Permittee shall implement an ongoing program to detect and eliminate illicit discharges into the MS4, to the maximum extent practicable. The program shall include, at a minimum, the following:
 - i. An initial map shall be provided in the SWMPP with updates, if any, provided each year in the annual report. The map shall include, at a minimum:
 - 1. The latitude/longitude of all known outfalls;
 - 2. The names of all waters of the State that receive discharges from these outfalls; and,
 - 3. Structural BMPs owned, operated, or maintained by the Permittee.
 - ii. To the extent allowable under State law, an ordinance or other regulatory mechanism that effectively prohibits non-storm water discharges to the MS4. The ordinance or other regulatory mechanism shall be reviewed annually and updated as necessary and shall:
 - 1. Include escalating enforcement procedures and actions; and
 - 2. Require the removal of illicit discharges and the immediate cessation of improper disposal practices upon identification of responsible parties. Where the removal of illicit discharge within ten (10) working days is not possible, the ordinance shall require an expeditious schedule for removal of the discharge. In the interim, the ordinance shall require the operator of the illicit discharge to take all reasonable and prudent measures to minimize the discharge of pollutants to the MS4.
 - iii. A dry weather screening program designed to detect and address non-storm water discharges to the MS4. This program must address, at a minimum, dry weather screening of fifteen percent (15%) of the outfalls once per year with all (100 percent) screened at least once per five years. Priority areas, as described by the Permittee in the SWMPP, will be dry weather screened on a more frequent schedule as outlined in the SWMPP. If any indication of a suspected illicit discharge, from an unidentified

- source, is observed during the dry weather screening, then the Permittee shall follow the screening protocol as outlined in the SWMPP.
- iv. Procedures for tracing the source of a suspect illicit discharge as outlined in the SWMPP. At a minimum, these procedures will be followed to investigate portions of the MS4 that, based on the results of the field screening or other appropriate information, indicate a reasonable potential of containing illicit discharges or other sources of non-storm water.
 - v. Procedures for eliminating an illicit discharge as outlined in the SWMPP;
 - vi. Procedures to notify ADEM of a suspect illicit discharge entering the Permittee's MS4 from an adjacent MS4 as outlined in the SWMPP;
 - vii. A mechanism for the public to report illicit discharges discovered within the Permittee's MS4 and procedures for appropriate investigation of such reports;
 - viii. A training program for appropriate personnel on identification, reporting, and corrective action of illicit discharges;
 - ix. Address the following categories of non-storm discharges or flows (i.e., illicit discharges) only if the Permittee or the Department identifies them as significant contributors of pollutants to your small MS4: water line flushing, landscape irrigation, diverted stream flows, rising ground waters, uncontaminated ground water infiltration (infiltration is defined as water other than wastewater that enters a sewer system, including foundation drains, from the ground through such means as defective pipes, pipe joints, connections, or manholes. Infiltration does not include, and is distinguished from, inflow), uncontaminated pumped ground water, discharges from potable water sources, foundation drains, air conditioning condensation, irrigation water, springs, water from crawl space pumps, footing drains, lawn watering run-off, individual residential car washing, flows from riparian habitats and wetlands, discharge or flows from firefighting activities (to include fire hydrant flushing); dechlorinated swimming pool discharges, and residual street wash water, discharge authorized by and in compliance with a separate NPDES permit; and
 - x. The Permittee may also develop a list of other similar occasional incidental non- storm water discharges (e.g. non-commercial or charity car washes, etc.) that will not be addressed as illicit discharges. These non- storm water discharges must not be reasonably expected (based on information available to the Permittees) to be significant sources of pollutants to the municipal separate storm sewer system, because of either the nature of the discharges or conditions you have established for allowing these discharges to your MS4 (e.g., a charity car wash with appropriate controls on frequency, proximity to impaired waterbodies, BMPs on the wash water, etc.). You must document in your SWMPP any local controls or conditions placed on the discharges. The Permittee must include a provision prohibiting any individual non- storm water discharge that is

determined to be contributing significant amounts of pollutants to your MS4.

- b. The Permittee shall report each year in the annual report the following information:
- i. List of outfalls observed during the dry weather screening;
 - ii. Updated MS4 map(s) unless there are no changes to the map that was previously submitted. When there are no changes to the map, the annual report must state this;
 - iii. Copies of, or a link to, the IDDE ordinance or other regulatory mechanism; and
 - iv. The number of illicit discharges investigated, the screening results, and the summary of corrective actions taken to include dates and timeframe of response.

3. Construction Site Storm Water Runoff Control

- a. The Permittee must develop/revise, implement and enforce an ongoing program to reduce, to the maximum extent practicable, the pollutants in any storm water runoff to the MS4 from qualifying construction sites. The program shall include the following at a minimum:
- i. Specific procedures for construction site plan (including erosion prevention and sediment controls) review and approval: The MS4 procedures must include an evaluation of plan completeness and overall BMP effectiveness;
 - ii. To the extent allowable under State law, an ordinance or other regulatory mechanism to require erosion and sediment controls, sanctions to ensure compliance, and to provide all other authorities needed to implement the requirements of Part III.B.3 of this permit;
 - iii. A training program for MS4 site inspection staff in the identification of appropriate construction best management practices (example: QCI training in accordance with ADEM Admin Code. R. 335-6-12 or the Alabama Construction Site General Permit);
 - iv. Procedures for the periodic inspection of qualifying construction sites to verify the use of appropriate erosion and sediment control practices that are consistent with the Alabama Handbook for Erosion Control, Sediment Control, And Stormwater Management on Construction Sites and Urban Areas published by the Alabama Soil and Water Conservation Committee (hereinafter the "Alabama Handbook"). The frequency and prioritization of inspection activities shall be documented in the SWMPP and must include a minimum inspection frequency of once each month for priority construction sites;
 - v. Procedures, as outlined in the SWMPP, to notify ADEM of construction sites that do not have a NPDES permit or ineffective BMPs that are discovered during the periodic inspections. The notification must provide,

at a minimum, the specific location of the construction project, the name and contact information from the owner or operator, and a summary of the site deficiencies; and

- vi. A mechanism for the public to report complaints regarding discharges from qualifying construction sites.
- b. ADEM implements a State-wide NPDES construction storm water regulatory program. As provided by 40 CFR Part 122.35(b), the Permittee may rely on ADEM for the setting of standards for appropriate erosion controls and sediment controls for qualifying construction sites and for enforcement of such controls, and must document this in its SWMPP. If the Permittee elects not to rely on ADEM's program, then the Permittee must include the following, at a minimum, in its SWMPP:
 - i. Requirements for construction site operators to implement appropriate erosion and sediment control BMPs consistent with the Alabama Handbook for Erosion Control, Sediment Control, And Stormwater Management on Construction Sites and Urban Areas published by the Alabama Soil and Water Conservation Committee (hereinafter the "Alabama Handbook");
 - ii. Requirements for construction site operators to control waste such as discarded building materials, concrete truck washout, chemicals, litter, and sanitary waste at the construction site that may cause adverse impacts to water quality;
 - iii. Development and implementation of an enforcement strategy that includes escalating enforcement remedies to respond to issues of non-compliance;
 - iv. An enforcement tracking system designed to record instances of non-compliance and the MS4's responding actions. The enforcement case documentation should include:
 - 1. Name of owner/operator
 - 2. Location of construction project or industrial facility
 - 3. Description of violations
 - 4. Required schedule for returning to compliance
 - 5. Description of enforcement response used, including escalated responses if repeat violation occur or violations are not resolved in a timely manner;
 - 6. Accompanying documentation of enforcement response (e.g., notices of noncompliance, notices of violation, etc);
 - 7. Any referrals to different departments or agencies; and
 - 8. Date violation was resolved
 - v. The Permittee must keep records of all inspections (i.e. inspection reports) and employee training required by Part III.3.a.
- c. The Permittee shall include within the SWMPP the following information:
 - i. Procedures for site plan reviews as required by Part III.B.3.a.i;
 - ii. A copy or link of the ordinance or other regulatory mechanism required by Part III.B.3.a.ii.;

- iii. Plans for the training of MS4 site inspection staff as required by Part III.B.3.a.iii; and
- iv. A site inspection plan meeting the requirements of Part III.B.3.a.iv; and
- d. The Permittee shall maintain the following information and make it available upon request:
 - i. Documentation of all inspections conducted of qualifying construction sites as required by Part III.B.3.a.iv. The inspection documentation shall include, at a minimum, the following:
 - 1. Facility type;
 - 2. Inspection date;
 - 3. Name and signature of inspector;
 - 4. Location of construction project;
 - 5. Owner/operator information (name, address, phone number, email);
 - 6. Description of the storm water BMP condition that may include, but not limited to, the quality of vegetation and soils, inlet and outlet channels and structures, embankments, slopes and safety benches, spillways, weirs, and other control structures; and sediment and debris accumulation in storage and forebay areas as well as in and around inlet and outlet structures; and
 - 7. Photographic documentation of any issues and/or concerns.
 - ii. Documentation of referrals of noncompliant construction sites and/or enforcement actions taken at construction sites to include, at a minimum, the following:
 - 1. Name of owner/operator
 - 2. Location of construction project;
 - 3. Description of violation;
 - 4. Required schedule for returning to compliance;
 - 5. Description of enforcement response used, including escalated responses if repeat violations occur; and
 - 6. Accompanying documentation of enforcement responses (e.g. notices of non-compliance, notices of violations, etc).
 - iii. Records of public complaints including:
 - 1. Date, time and description of the complaint;
 - 2. Location of subject construction sites; and
 - 3. Identification of any actions taken (e.g. inspections, enforcement, corrections). Identifying information must be sufficient to cross-reference inspection and enforcement records.
- e. The Permittee shall report each year in the annual report the following information:
 - i. A description of any completed or planned revisions to the ordinance or regulatory mechanism required by Part III.B.3.a.i and the most recent copy, or a link to the ordinance; and
 - ii. List of all active construction sites within the MS4 to include the following summary:

1. Number of construction site inspections;
2. Number of non-compliant construction site referrals and/or enforcement actions and description of violations;
3. Number of construction site runoff complaints received; and
4. Number of MS4 staff/inspectors trained.

4. Post-Construction Storm Water Management in New Development and Redevelopment

a. Post-construction storm water management refers to the activities that take place after construction occurs, and includes structural and non-structural controls including low-impact development and green infrastructure practices to obtain permanent storm water management over the life of the property's use. These post construction controls should be considered during the initial site development planning phase.

i. The Permittee must develop/revise, implement, and enforce a program to address storm water runoff from qualifying new development and redevelopment projects, to the maximum extent practicable. This program shall ensure that controls are in place to prevent or minimize water quality impacts. Specifically, the Permittee shall:

1. Develop/revise and outline in the SWMPP procedures for the site-plan review and approval process and a required re-approval process when changes to post-construction controls are required; and
2. Develop/revise and outline in the SWMPP procedures for a post-construction process to demonstrate and document that post-construction storm water measures have been installed per design specifications, which includes enforceable procedures for bringing noncompliant projects into compliance.

ii. The Permittee must develop and implement strategies which may include a combination of structural and/or non-structural BMPs designed to ensure, to the maximum extent practicable, that the volume and velocity of pre-construction stormwater runoff is not significantly exceeded. A design rainfall event with an intensity up to that of a 2yr-24hr storm event shall be the basis for the design and implementation of post-construction BMPs.

iii. To the extent allowable under State law, the Permittee must develop and institute the use of an ordinance or other regulatory mechanism to address post-construction runoff from qualifying new development and redevelopment projects.

iv. The Permittee must require adequate long-term operation and maintenance of BMPs. One or more of the following as applicable:

1. The developer's signed statement accepting responsibility for maintenance until the maintenance responsibility is legally transferred to another party; and/or
 2. Written conditions in the sales or lease agreement that require the recipient to assume responsibility for maintenance; and/or
 3. Written conditions in project conditions, covenants and restrictions for residential properties assigning maintenance responsibilities to a home owner's association, or other appropriate group, for maintenance of structural and treatment control management practices; and/or
 4. Any other legally enforceable agreement that assigns permanent responsibility for maintenance of structural or treatment control management practices.
- v. The Permittee shall perform or require the performance of post-construction inspections, at a minimum of once per year, to confirm that post-construction BMP's are functioning as designed. The Permittee shall include an inspection schedule, to include inspection frequency, within the SWMPP.
- vi. The Permittee shall maintain or require the developer/owner/operator to keep records of post-construction inspections, maintenance activities and make them available to the Department upon request and require corrective actions to poorly functioning or inadequately maintained post-construction BMP's.
- vii. The Permittee shall review and evaluate policies and ordinances related to building codes, or other local regulations, with a goal of identifying regulatory and policy impediments to the installation of green infrastructure and low-impact development techniques.
- b. The Permittee shall report each year in the annual report the following information:
- i. Copies of, or link to, the ordinance or other regulatory mechanism required by Part III.B.4.a.iii;
 - ii. A list of the post-construction structural controls installed and inspected during the permit year;
 - iii. Updated inventory of post-construction structural controls including those owned by the Permittee;
 - iv. Number of inspections performed on post-construction structural controls; and,
 - v. Summary of enforcement actions.

5. Pollution Prevention/Good Housekeeping for Municipal Operations

- a. The Permittee shall develop, implement, and maintain a program that will prevent or reduce the discharge of pollutants in storm water run-off from municipal operations to the maximum extent practicable. The program elements shall include, at a minimum, the following:

- i. An inventory of all municipal facilities, including municipal facilities that have the potential to discharge pollutants via storm water runoff;
 - ii. Strategies for the implementation of BMPs to reduce litter, floatables and debris from entering the MS4 and evaluate those BMPs annually to determine their effectiveness. If a BMP is determined to be ineffective or infeasible, then the BMP must be modified. The Permittee shall also develop a plan to remove litter, floatable and debris material from the MS4, including proper disposal of waste removed from the system;
 - iii. A Standard Operating Procedures (SOP) detailing good housekeeping practices to be employed at appropriate municipal facilities and during municipal operations that may include, but not limited to, the following:
 1. Equipment washing;
 2. Street sweeping;
 3. Maintenance of municipal roads including public streets, roads, and highways, including but not limited to unpaved roads, owned, operated, or under the responsibility of the Permittee;
 4. Storage and disposal of chemicals, Pesticide, Herbicide and Fertilizers (PHFs) and waste materials;
 5. Vegetation control, cutting, removal, and disposal of the cuttings;
 6. Vehicle fleets/equipment maintenance and repair;
 7. External Building maintenance; and
 8. Materials storage facilities and storage yards.
 - iv. A program for inspecting municipal facilities for good housekeeping practices, including BMPs. The program shall include checklists and procedures for correcting noted deficiencies;
 - v. A training program for municipal facility staff in good housekeeping practices as outlined in the SOP developed pursuant to Part III.B.5.a.iii; and
- b. The Permittee shall include within the SWMPP the following information:
 - i. The inventory of municipal facilities required by Part III.B.5.a.i;
 - ii. Schedule for developing the SOP of good housekeeping practices required by Part III.B.5.a.iii;
 - iii. An inspection plan and schedule, including checklists and any other materials needed to comply with Part III.B.5.a.iv; and
 - iv. A description of the training program and training schedule required by Part III.B.5.a.v.
- c. The Permittee shall report each year in the annual report the following information:
 - i. Any updates to the municipal facility inventory;
 - ii. An estimated amount of floatable material collected from the MS4 as required by Part III.B.5.a.ii;
 - iii. Any updates to the inspection plan
 - iv. The number of inspections conducted; and
 - v. Any updates to the SOP of good housekeeping practices.

Calhoun County Alabama


[Home](#)
[Offices](#)
[Government](#)
[Employment](#)
[Links](#)
[Home](#) | [Highway Department](#) | [Storm Water](#)

About Us

[Our New Location](#)
[Bridge Information](#)
[Road Information](#)
[Storm Water Info](#)
[FAQ](#)
[Forms and Maps](#)
[Department Home](#)


OTHER RESOURCES

[Alabama DOT](#)
[US DOT](#)

Calhoun County Highway
Department
160 Seaton Drive
Anniston, AL 36205
Phone: 256-237-4657
highway@calhouncounty.org

Calhoun County Storm Water Information

Calhoun County is designated by the United States Environmental Protection Agency (USEPA) and the Alabama Department of Environmental Management (ADEM) as an owner/operator of a Phase II municipal separate storm sewer system (MS4). The USEPA's Phase II Stormwater Regulations, which were implemented in March 2003, require operators of regulated Phase II MS4s to obtain a National Pollutant Discharge Elimination System (NPDES) permit and to develop a stormwater management program designed to protect water quality and to prevent harmful pollutants in stormwater runoff from being washed into the MS4. The County received its current Phase II Stormwater NPDES permit (ALR040004) on October 1, 2016. The current permit coverage will expire on October 31, 2021.

The intent of the Phase II regulations is to reduce the adverse impacts to water quality and aquatic habitat by instituting the use of controls on the unregulated sources of stormwater discharges. In order to comply with these regulations Calhoun County must satisfy six "minimum control measures," including:

- Public Education and Outreach
- Public Participation/Involvement
- Illicit Discharge Detection and Elimination
- Construction Site Runoff Control
- Post-Construction Stormwater Management
- Pollution Prevention/Good Housekeeping

Useful Links

[Calhoun County Storm Water Plan](#) (Adobe pdf document)

[2015 Storm Water Management Program Report](#) (Large Adobe pdf document)

[2014 Storm Water Management Program Report](#) (Large Adobe pdf document)

Phase II Information

[Urbanized map for Calhoun County](#) (Adobe pdf document)

[Alabama Low Impact Development Handbook](#)

[Alabama Handbook for Erosion Control, Sediment Control and Stormwater Management on Construction Sites and Urban Areas](#)

Who do I contact with a storm water concern?

Please contact Chris Gann, Assistant County Engineer at (256) 237-4657.

[About Us](#) | [Privacy Policy](#) | [Contact Us](#) | ©2016 Calhoun County Alabama

Environmental Programming in Calhoun County
1/1/2016-12/31/2016

Wonderful World of Plants

- 1/12/16 Camp Lewis Academy (25 students)
- 4/12/16 Camp Lewis Academy (23 students)
- 7/19/16 Camp Lewis Academy (18 students)
- 12/13/16 Camp Lewis Academy (20 students)



Skins and Skulls

- 1/12/16 Wellborn Elementary School, 5th Grade (110 students)
- 1/13/16 Alexandria High School, 6th Grade (148 students)
- 1/14/16 Ohatchee Elementary School, 6th Grade (75 students)
- 1/15/16 Ohatchee Elementary School, 5th Grade (90 students)
- 1/19/16 White Plains Middle School, 5th Grade (114 students)
- 1/20/16 White Plains Middle School, 6th Grade (120 students)
- 1/26/16 Alexandria High School 6th Grade (148 students)
- 1/27/16 Wellborn Elementary School, 6th Grade (105 students)



Wonderful World of Animals

- 2/10/16 Wellborn Elementary School, 5th Grade (110 students)
- 2/11/16 Ohatchee Elementary School, 6th Grade (75 students)
- 2/16/16 White Plains Middle School, 5th Grade (114 students)
- 2/23/16 Camp Lewis Academy (25 students)
- 2/24/16 White Plains Middle School, 6th Grade (120 students)
- 2/25/16 Wellborn Elementary School, 6th Grade (105 students)
- 2/26/16 Ohatchee Elementary School, 5th Grade (90 students)
- 3/2/16 Alexandria High School (148 students)

Skins and Skulls

- 7/13/16 Camp Cane Creek (15 students)
- 9/14/16 White Plains Middle School, 6th Grade (125 students)
- 9/15/16 Kitty Stone Elementary School, 5th Grade (120 students)
- 9/17/16 Fall Festival, Cane Creek Gardens (approximately 500 attendees)
- 9/20/16 White Plains Middle School, 5th Grade (110 students)

- 9/22/16 Piedmont Elementary School, 5th Grade (80 students)
- 9/23/16 Ohatchee Elementary School, 5th Grade (90 students)
- 9/27/16 Camp Lewis Academy (25 students)
- 10/5/16 Kitty Stone Elementary School, 4th Grade (125 students)
- 10/6/16 Kitty Stone Elementary School, 6th Grade (100 students)
- 10/11/16 Alexandria High School, 6th Grade (180 students)



Wonderful World of Animals Part I

- 10/12/16 White Plains Middle School, 5th Grade (110 students)
- 10/14/16 Ohatchee Elementary School (90 students)
- 10/19/16 Piedmont Elementary School (80 students)
- 10/20/16 Kitty Stone Elementary School (120 students)
- 10/25/16 Ohatchee Elementary School, 6th Grade (85 students)
- 10/26/16 White Plains Middle School, 6th Grade (125 students)

Wonderful World of Animals Part II

- 11/8/16 Alexandria High School (180 students)
- 11/06/16 White Plains Elementary School, 5th Grade (110 students)
- 11/10/16 Kitty Stone Elementary School, 4th Grade (125 students)
- 11/14/16 Ohatchee Elementary School, 6th Grade (85 students)
- 11/15/16 Camp Lewis Academy (24 students)
- 11/16/16 White Plains Middle School (110 students)
- 11/17/16 Kitty Stone Elementary School (120 students)
- 11/29/16 Piedmont Elementary School (80 students)
- 11/30/16 Ohatchee Elementary School, 5th Grade (90 students)
- 12/7/16 White Plains Middle School, 6th Grade (125 students)



Wildlife of Alabama & Native Habitats

- 4/18/16 Earth Day 2016 (381 5th grade students)
- 4/19/16 Earth Day 2016 (222 5th grade students)
- 4/20/16 Earth Day 2016 (214 5th grade students)
- 5/17/16 Camp Lewis Academy (28 students)

- 6/8/16 Calhoun County Master Gardeners (50 attendees)
- 7/14/16 Camp Cane Creek (15 students)
- 8/23/16 Camp Lewis Academy (18 students)
- 11/15/16 Camp Lewis Academy (17 students)
- 11/11/16 Extension's Holiday TV Program (ran on local WJXS multiple times and dates through the end of December)
- 12/14/16 4-Homeschool Club (12 students)

Care & Maintenance of Landscape Plants

- 2/9/16 Camp Lewis Academy (20 students)
- 5/24/16 Camp Lewis Academy (21 students)
- 8/16/16 Camp Lewis Academy (25 students)
- 11/8/16 Camp Lewis Academy (28 students)

Plant Propagation

- 1/16/16 Camp Lewis Academy (23 students)
- 4/19/16 Camp Lewis Academy (20 students)
- 7/26/16 Camp Lewis Academy (21 students)
- 10/25/16 Camp Lewis Academy (18 students)

Entomology

- 10/18/16 Camp Lewis Academy (17 students)

Hydroelectricity

- 3/8/16 Camp Lewis Academy (20 students)

Chemical Application & Reading Labels

- 6/14/16 Camp Lewis Academy (20 students)

Water Conservation & Quality

- 4/18/16 Earth Day 2016 (381 4th grade students)
- 4/19/16 Earth Day 2016 (222 4th grade students)
- 4/20/16 Earth Day 2016 (214 4th grade students)

Electrical Safety

- 4/18/16 Earth Day 2016 (381 4th grade students)
- 4/19/16 Earth Day 2016 (222 4th grade students)
- 4/20/16 Earth Day 2016 (214 4th grade students)

Taking Care of our Environment (The Lorax Play)

- 4/18/16 Earth Day 2016 (381 4th grade students)



4/19/16 Earth Day 2016 (222 4th grade students)
4/20/16 Earth Day 2016 (214 4th grade students)

Recycling

4/18/16 Earth Day 2016 (381 4th grade students)
4/19/16 Earth Day 2016 (222 4th grade students)
4/20/16 Earth Day 2016 (214 4th grade students)

Kayaking & Water Safety

4/18/16 Earth Day 2016 (381 4th grade students)
4/19/16 Earth Day 2016 (222 4th grade students)
4/20/16 Earth Day 2016 (214 4th grade students)

Food Safety & Mrs. Bacteria

4/18/16 Earth Day 2016 (381 4th grade students)
4/19/16 Earth Day 2016 (222 4th grade students)
4/20/16 Earth Day 2016 (214 4th grade students)

Let's Talk About the Weather

5/25/16 Lunch & Learn Session (35 attendees)

Green Roofs

5/27/16 Lunch & Learn Session (45 attendees)



Watersheds

7/13/16 Calhoun County Master Gardeners Meeting
(55 attendees)

Rain Gardens

8/10/16 Calhoun County Master Gardeners Meeting
(50 attendees)

Choosing the Right Insecticide

2/19/16 Cane Creek Community Gardens Workshop
(20 attendees)

Pollinators in the Landscape

4/12/16 Anniston Museum of Natural History
(18 attendees)

Backyard Irrigation

7/21/16 Anniston Museum of Natural History
(29 attendees)

Your Health & The Environment (Health Fair)

9/17/16 Anniston Aquatic Center
(approximately 150 attendees)

Arbor Day Events

2/29/16 Norwood Hodges Community Center
(60 attendees)

Native Birds & Feeders

9/19/16 Fall Fest, Cane Creek Gardens
(approximately 100 attendees)

Beekeeping 101

1/23/16 Piedmont (18 attendees)
1/30/16 Piedmont (18 attendees)
2/6/16 Piedmont (18 attendees)
2/13/16 Piedmont (18 attendees)



Water Critters & Kayaking

- 4/26/16 4-H Tree Amigos Club (15 students)
- 5/5/16 Weaver Elementary School (18 students)
- 9/20/16 4-H Tree Amigos Club (14)
- 9/27/16 4-H Tree Amigos Club (14)



EnviroScapes/Watersheds

- 6/20/16 Camp Cane Creek (15 students)
- 11/16/16 Pleasant Valley Elementary School (100 students)
- 11/29/16 Alexandria Elementary School (75 students)
- 11/30/16 Wellborn Elementary School (100 students)

Water Cycles

- 6/21/16 Camp Cane Creek (15 students)

Water Testing

- 6/23/16 Camp Cane Creek (15 students)
- 6/28/16 Camp Cane Creek (15 students)
- 6/30/16 Camp Cane Creek (15 students)
- 7/12/16 Camp Cane Creek (15 students)
- 7/14/16 Camp Cane Creek (15 students)
- 7/19/16 Camp Cane Creek (15 students)
- 7/21/16 Camp Cane Creek (15 students)



Water Quality

- 1/13/16 Alexandria Elementary School (75 students)
- 1/15/16 Ohatchee Elementary School (75 students)
- 1/19/16 Alexandria Elementary School (75 students)
- 1/21/16 Pleasant Valley Elementary School (100 students)
- 1/28/16 Wellborn Elementary School (100 students)

4-H Alabama Water Watch

- 9/8/16 Ohatchee Elementary School, 4th Grade (100 students)
- 9/15/16 Saks Elementary School, 4th Grade (100 students)
- 9/27/16 Alexandria Elementary School, 4th Grade (125 students)
- 9/28/16 Pleasant Valley Elementary School, 4th Grade (100 students)
- 9/30/16 Wellborn Elementary School, 4th Grade (100 students)
- 10/5/16 Saks Elementary School, 4th Grade (100 students)



Calhoun County
 1702 Noble Street, Ste 108
 Anniston, AL 36201
 256-237-1621 256-238-8630 (fax)
www.aces.edu/calhoun

- 10/12/16 Pleasant Valley Elementary School, 4th Grade (100 students)
- 10/13/16 Ohatchee Elementary School, 4th Grade (100 students)
- 10/25-26/16 Alexandria Elementary School, 4th Grade (125 students)
- 10/27/16 Wellborn Elementary School, 4th Grade (100 students)

Enviroscape / Watersheds & Water Runoff

- 10/3/16 Ohatchee Elementary School, 4th Grade (100 students)
- 10/5/16 Saks Elementary School, 4th Grade (100 students)
- 10/14-15/16 Alexandria Elementary School, 4th Grade (125 students)
- 10/16/16 Pleasant Valley Elementary School, 4th Grade (100 students)
- 10/17/16 Wellborn Elementary School, 4th Grade (100 students)
- 11/16/16 Pleasant Valley Elementary School (100 students)
- 11/29/16 Alexandria Elementary School (125 students)

Greenhouse Maintenance/Propagation

- 1/6/16 Camp Lewis Academy (18 students)
- 1/13/16 Camp Lewis Academy (20 students)
- 1/20/16 Camp Lewis Academy (23 students)
- 1/27/16 Camp Lewis Academy (17 students)
- 2/3/16 Camp Lewis Academy (19 students)
- 2/10/16 Camp Lewis Academy (20 students)
- 2/17/16 Camp Lewis Academy (18 students)
- 2/24/16 Camp Lewis Academy (17 students)
- 3/2/16 Camp Lewis Academy (20 students)
- 3/9/16 Camp Lewis Academy (20 students)
- 3/19/16 Camp Lewis Academy (19 students)
- 3/23/16 Camp Lewis Academy (17 students)
- 3/30/16 Camp Lewis Academy (20 students)
- 4/6/16 Camp Lewis Academy (16 students)
- 4/13/16 Camp Lewis Academy (20 students)
- 4/20/16 Camp Lewis Academy (20 students)
- 4/27/16 Camp Lewis Academy (20 students)



extension

ALABAMA A&M & AUBURN UNIVERSITIES

Calhoun County
 1702 Noble Street, Ste 108
 Anniston, AL 36201
 256-237-1621 256-238-8630 (fax)
www.aces.edu/calhoun

5/4/16	Camp Lewis Academy (17 students)
5/11/16	Camp Lewis Academy (18 students)
5/18/16	Camp Lewis Academy (18 students)
5/25/16	Camp Lewis Academy (18 students)
6/1/16	Camp Lewis Academy (21 students)
6/8/16	Camp Lewis Academy (21 students)
6/15/16	Camp Lewis Academy (21 students)
6/22/16	Camp Lewis Academy (21 students)
6/29/16	Camp Lewis Academy (21 students)
7/6/16	Camp Lewis Academy (17 students)
7/13/16	Camp Lewis Academy (15 students)
7/20/16	Camp Lewis Academy (18 students)
7/27/16	Camp Lewis Academy (20 students)
8/3/16	Camp Lewis Academy (17 students)
8/10/16	Camp Lewis Academy (17 students)
8/17/16	Camp Lewis Academy (17 students)
8/24/16	Camp Lewis Academy (20 students)
8/31/16	Camp Lewis Academy (21 students)
9/7/16	Camp Lewis Academy (23 students)
9/14/16	Camp Lewis Academy (23 students)
9/21/16	Camp Lewis Academy (23 students)
9/28/16	Camp Lewis Academy (21 students)
10/5/16	Camp Lewis Academy (23 students)
10/12/16	Camp Lewis Academy (23 students)
10/19/16	Camp Lewis Academy (23 students)
10/26/16	Camp Lewis Academy (21 students)
11/2/16	Camp Lewis Academy (22 students)



11/9/16 Camp Lewis Academy (21 students)
 11/16/16 Camp Lewis Academy (20 students)
 11/30/16 Camp Lewis Academy (21 students)

Web of Life

6/27/16 Camp Cane Creek (15 students)

Reduce, Reuse, Recycle

6/27/16 Camp Cane Creek (15 students)

Shelter

7/18/16 Camp Cane Creek (15 students)

Oh Deer!

7/19/16 Camp Cane Creek (15 students)

Recycling

7/20/16 Camp Cane Creek (15 students)

Natural Scavenger Hunt

7/11/16 Camp Cane Creek (15 students)

Solar Energy – Smores in a Pizza Box!

7/12/16 Camp Cane Creek (15 students)

Daily Camp Cane Creek Activities (2 wks in June & 2 wks in July)

- Creek walk to observe environment, habitat & creatures.
- Nature journaling.
- iPad research.
- Weather station.
- Gardening –weeding & watering.
- Observe terrarium & aquarium.

Educational Videos Shown during Camp Cane Creek (2wks in June & 2 wks in July)

- "Wall E"
- "Magic School Bus: Under the Sea"
- "Planet Earth"

Alabama The Great!

6/1-6/3/16 Alabama 4-H Camp, Columbiana (19 county students attended)



Environmental Arts & Crafts

6/1-6/3/16 Alabama 4-H Camp, Columbiana (29 county students attended)

Rocketry & Robotics

6/1-6/3/16 Alabama 4-H Camp, Columbiana (29 county students attended)

Wild West Survival

6/1-6/3/16 Alabama 4-H Camp, Columbiana
(29 county students attended)

Building Bridges/Taking Care of our Environment, Part 1

10/25/16 Camp Lewis Academy (20 students)
11/14/16 Weaver Elementary School, 6th Grade (102 students)
11/30/16 Wellborn Elementary School, 5th Grade (95 students)
11/28/16 Tenth Street Elementary School, 5th Grade
(55 students)

Building Bridges, Part 2

10/25/16 Camp Lewis Academy (20 students)

Technology or Not Technology (Found in the Environment??)

10/5/16 Tenth Street Elementary School, 5th Grade (55 students)
10/14/16 Weaver Elementary School, 6th Grade (102 students)
10/26/16 Wellborn Elementary School, 5th Grade (95 students)



Plants in Everyday Life

10/24/16 Wellborn Elementary School, 6th Grade
(76 students)

Gardening Projects

3/3/16 Wellborn Elementary School (100 students)
3/8/16 Alexandria Elementary School (75 students)
3/9/16 Alexandria Elementary School (75 students)
3/11/16 Ohatchee Elementary School (75 students)
3/17/16 Pleasant Valley Elementary (100 students)
4/8/16 Ohatchee Elementary School (75 students)
5/6/16 Pleasant Valley Elementary (100 students)
5/19/16 Alexandria Elementary School (75 students)
5/20/16 Alexandria Elementary School (75 students)

Environmental Science Career Day

4/14/16 Approximately 160 participants

Envirobowl State Competition

3/10/16 Approximately 75 participants

Soils

11/16/16 Wellborn Elementary School, 6th Grade (76 students)

Water Filters & Purification

11/9/16 4-H Homeschool Club (10 students)





Calhoun County
 1702 Noble Street, Ste 108
 Anniston, AL 36201
 256-237-1621 256-238-8630 (fax)
 www.aces.edu/calhoun

Horses & The Environment

9/15/16 4-H Trailblazers Horse Club (4 students)

Nature Ornaments

11/9/16 4-H Homeschool Club (7 students)

RiverKids Survival Training

5/9/16 Extension Staff (3 participants)

Tree Amigos Field Trip /Public Service Commission

4-H Tree Amigos Club (18 students)

4-H Field Trip / Solar Power Development

7/19/16 Coosa Valley Youth Services Class
 (20 students)

Outdoor Survival Skills

1/6/16 4-H Homeschool Club (8 students)

CPR Training

2/29/16 Calhoun County Extension Staff (15)

Jacksonville State University Recycling Kick-Off

2/1/16 Jacksonville State University Staff &
 Students (approximately 250)

Camping & The Environment

2/3/16 4-H Homeschool Club (8 students)

Food Webs

2/9/16 Alexandria Elementary School (75 students)
 2/10/16 Alexandria Elementary School (75 students)
 2/11/16 Wellborn Elementary School (100 students)
 2/18/16 Ohatchee Elementary School (75 students)
 2/25/16 Pleasant Valley Elementary School (100 students)





Calhoun County
1702 Noble Street, Ste 108
Anniston, AL 36201
256-237-1621 256-238-8630 (fax)
www.aces.edu/calhoun

Alabama Academy of Sciences Conference

2/19/16 Presentation by Rachel Brinks, County Agent
(approximately 200 attendees)

Take Pride in Jacksonville Day

4/23/16 Citizens collected 1000 containers of paint, 1500 pounds of paper, 14 cubic yards of trash & recycling

Get Outdoors & Enjoy the Environment

5/14/16 Approximately 50 participants

4-H Chick Chain Project

May-September 19 students



Crew Safety Meeting

1-14-16

Eric Feemster Safety Committee Chairman

The following items were discussed at today's meeting:
Safetysurance.com winter driving

1. Keith Miller

2. Robert Frost

3. Derrick Khao

4. Sgt P. [unclear]

5. Charles [unclear]

6. Mandy [unclear]

7. Jim Clay

8. [unclear]

9. Jim [unclear]

10. James [unclear]

11. Donald [unclear]

12. Eric [unclear]

13. _____

14. _____

15. _____

16. _____

17. _____

18. _____

19. _____

20. _____

Crew Safety Meeting

1-14-16

Eric Feemster Safety Committee Chairman

The following items were discussed at today's meeting:

Safetysurance.com winter driving

1. Tom KD 566

2. Moan Tunn

3. Ben Etk

4. Paul G. trip

5. Call G. B.

6. My wife

7. James Foster

8. Jeff Badger

9. Tom [unclear]

10. St. Helens #294

11. _____

12. _____

13. _____

14. _____

15. _____

16. _____

17. _____

18. _____

19. _____

20. [Signature]

Crew Safety Meeting

1-14-16

Eric Feemster Safety Committee Chairman

The following items were discussed at today's meeting:
Safetysurance.com winter driving

1. W. Lamar Murray
2. Wayne Sexton
3. James Williams
4. [Signature]
5. Johnnie S. Stokes
6. Lewis A.
7. Jonathan Roberts
8. _____
9. _____
10. _____
11. _____
12. _____
13. _____
14. _____
15. _____
16. _____
17. _____
18. _____
19. _____
20. _____

Crew Safety Meeting

1-14-16

Eric Feemster Safety Committee Chairman

The following items were discussed at today's meeting:

Safetysurance.com winter driving

1. Bonne Bron

2. Almie Iru

3. Wasson Ferguson

4. Terry Iru

5. Ann #223

6. Greg Hugel

7. _____

8. _____

9. _____

10. _____

11. _____

12. _____

13. _____

14. _____

15. _____

16. _____

17. _____

18. _____

19. _____

20. _____

Crew Safety Meeting

4-7-16

Eric Feenster Safety Committee Chairman

The following items were discussed at today's meeting:

Summer driving awareness retirement questions

1. Donna Brown

2. Alvin Iku

3. Wasson Langley

4. Terry Iku

5. Ann #223

6. Greg Hulse

7. _____

8. _____

9. _____

10. _____

11. _____

12. _____

13. _____

14. _____

15. _____

16. _____

17. _____

18. _____

19. _____

20. _____

Crew Safety Meeting

4-7-16

Eric Feemster Safety Committee Chairman

The following items were discussed at today's meeting:

Summer driving awareness retirement questions

1. W. Lamar Murray
2. Wayne Snyder
3. Yacov Williams
4. [Signature]
5. Jahnnie S. Tokes
6. Tennis Ae
7. Jonathan Roberts
8. _____
9. _____
10. _____
11. _____
12. _____
13. _____
14. _____
15. _____
16. _____
17. _____
18. _____
19. _____
20. _____

Crew Safety Meeting

4-7-16

Eric Feemster Safety Committee Chairman

The following items were discussed at today's meeting:

Summer driving awareness retirement questions

1. Tom K D 366

2. Myron Turner

3. Ben Etk

4. Phil Hefner

5. Carl Giff

6. Myron Wepp

7. James Foster

8. Jeff Bader

9. Tom Vanda

10. St. Helens #294

11. _____

12. _____

13. _____

14. _____

15. _____

16. _____

17. _____

18. _____

19. _____

20. Chris O'Neil

Crew Safety Meeting

4-7-14

Eric Feenster Safety Committee Chairman

The following items were discussed at today's meeting:

Summer awareness for driving retirement questions

1. Keith Miller

2. Robert Frost

3. Derek Khan

4. Sgt. P. Smith

5. Charles Howard

6. Nancy Dunder

7. Jim Clay

8. Matt Mass

9. Jim Duse

10. James Buss

11. Donald Landford

12. Eric Marshall

13.

14.

15.

16.

17.

18.

19.

20.

Crew Safety Meeting

7-14-16

Eric Feenster Safety Committee Chairman

The following items were discussed at today's meeting:

Safety Videos from Meadow Brook Insurance

1. Eric Mashburn

2. Ken Schick

3. Kenney & Co.

4. James Beya

5. C. Myers

6. Capt. J. J.

7. Hyman #223

8. Mason 711-205 361

9. Jeff Badgett

10. Johnnie Darr

11. Mark Linder

12. Clark Siler

13. Justin Bessner

14.

15.

16.

17.

18.

19.

20.

Crew Safety Meeting

7-14-16

Eric Feemster Safety Committee Chairman

The following items were discussed at today's meeting:
Safety Videos from Meadow Brook Insurance

1. Charles Edwards ²⁶⁵
2. Greg Rye
3. Brad Case
4. Phillip McElroy
5. Gary Verrion
6. Jim Buse
7. Gary Whitman
8. Richard Perry
9. Wayne Saylor
- 10.
- 11.
- 12.
- 13.
- 14.
- 15.
- 16.
- 17.
- 18.
- 19.
- 20.

Crew Safety Meeting

7-14-16

Eric Feemster Safety Committee Chairman

The following items were discussed at today's meeting:
Safety Videos from Meadow Brook Insurance

1. Tony Stone
2. Keith Williams
3. Donald Larkford
4. Daniel L. Deen
5. John Hoptel
6. Michael Lucas
7. James Ross
8. Johnnie Steves
9. Mark Oleson
10. Lobby Ward
11. May Wells
12. W. Sam Murray
13. Ronnie Brown
14. _____
15. _____
16. _____
17. _____
18. _____
19. _____
20. _____

Crew Safety Meeting

7-14-16

Eric Feemster Safety Committee Chairman

The following items were discussed at today's meeting:

Safety Videos from Meadow Brook Insurance

1. Jonathan Roubuck
2. Keni J. J.
3. St. William 294
4. Jim J. 360
5. Joe K. 370
6. Derek K.
7. Peter P.
8. John J.
9. Mike M.
10. Scott B.
11. Bo V.
- 12.
- 13.
- 14.
- 15.
- 16.
- 17.
- 18.
- 19.
- 20.

Crew Safety Meeting

10-6-16

Eric Feemster Safety Committee Chairman

The following items were discussed at today's meeting:

Calhoun County Policies per Meadow Brook Insurance requirement

1. Charles Howard

2. Roy Vinson

3. Kay 366

4. Donald Simpson

5. [Signature]

6. Mason Tamm

7. Medical [Signature]

8. George [Signature]

9. Kenneth [Signature]

10. Jim Buse

11. Jack [Signature]

12. Willie McCall

13. Just Bunt

14. [Signature]

15. [Signature]

16. _____

17. _____

18. _____

19. _____

20. _____

Crew Safety Meeting

10-6-16

Eric Feemster Safety Committee Chairman

The following items were discussed at today's meeting:

Calhoun County Policies per Meadow Brook Insurance requirement

1. John

2. Joe

3. Chris Steed

4. Jim

5. Al

6. Wendell

7. Scott

8. Eric Mack

9. Trudy Hubbard

10. Jeff Baly

11. Chris

12. Jonathan Roberts

13. Foley

14. Eric

15. _____

16. _____

17. _____

18. _____

19. _____

20. _____

Crew Safety Meeting

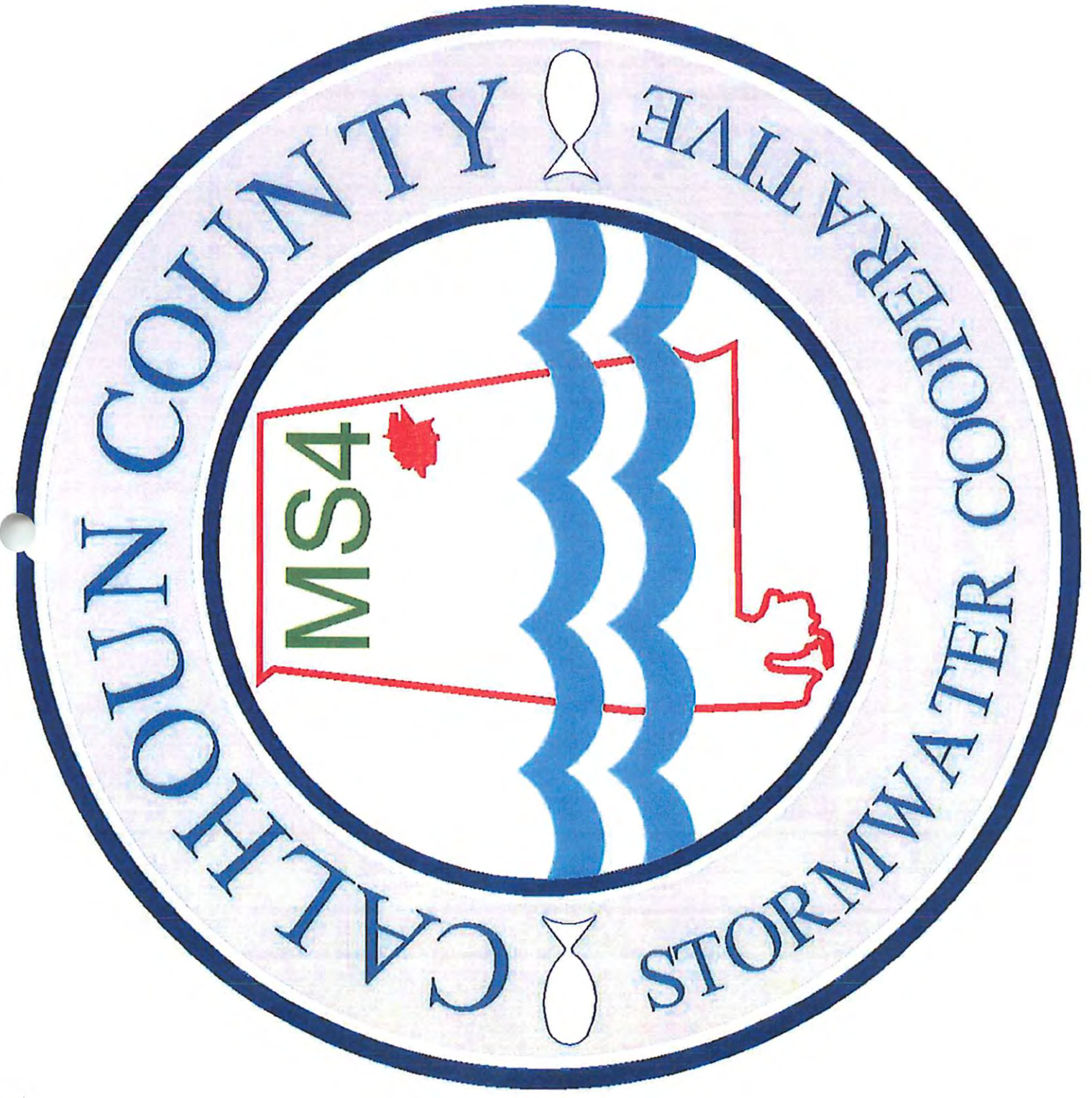
10-6-16

Eric Feemster Safety Committee Chairman





The following items were discussed at today's meeting:

Calhoun County Policies per Meadow Brook Insurance requirement

1. Deebeck, Peter
2. Wayne Sutton
3. St. Williams 294
4. Greg Sawyer
5. C. M. [unclear]
6. [unclear]
7. Johnnie [unclear]
8. [unclear]
9. James Beyer
10. Clubs [unclear]
11. Tony [unclear]
12. Keith [unclear]
13. Daniel R. [unclear]
14. [unclear]
15. Robby Ward
16. Brian Roseberry
17. [unclear]
18. [unclear]
19. [unclear]
20. Patrick O'Montgomery I



**CALHOUN COUNTY STORMWATER
COOPERATIVE MEETING MARCH 2, 2016**

SIGNATURE	AGENCY	EMAIL ADDRESS	PHONE
	CCHID	cgm@calhouncounty.org	256-237-4657
	City of Aniston	landraster@anniston.gov	256-231-7750
	ACES	mb0039@auburn.edu	256-452-5386
	CITY OF JACKSONVILLE	MSTEPHENS@JACKSONVILLE-FL.ORG	256-782-3840

AGENDA

CITIZENS ADVISORY COMMITTEE

Of the

CALHOUN AREA METROPOLITAN PLANNING ORGANIZATION (MPO)

East Alabama Regional Planning and Development Commission 3rd Floor Conference Room

10:00 am

March 23rd, 2016

- ✓ 1. Call to Order
 - ✓ 2. Introductions
 - ✓ 3. Old Business
 - ✓ a. Review of CAC minutes from January 27, 2016
 - ✓ b. Approval of CAC minutes from January 27, 2016
 - ✓ c. CAC Appointments and Welcome of New Members
 - d. TBA
 - ✓ 4. New Business
 - ✓ a. Review FY 16-19 TIP Update (Handout)
 - ✓ b. Review ADT's and Truck Mix on I-20
 - ✓ c. Alabama 2015 Infrastructure Report Card (Handout)
 - ✓ d. CAC Satisfaction Survey
 - ✓ e. Special Presentation - All About **Roundabouts** - Videos, Handouts & Brochures
 - f. TBA
 - ✓ 5. Other Business
 - a. Other Current Transportation Projects
 - b. Anniston Express and ADA Para-Transit Ridership
 - c. Next CAC Meeting — MAY 23 10:00 AM
 - d. TBA
 6. Adjourn
- 17th

MINUTES
CITIZENS ADVISORY COMMITTEE (CAC)
of the Calhoun Area Metropolitan Planning Organization (MPO)
Wednesday, January 27, 2016
10:00 a.m.

Those attending:

Richard Stubbs	Calhoun County
Marshall Shaddix	Oxford
Tim Huddleston	Calhoun County
Jack Plunk	EARPDC / MPO
Jamie Etheredge	Jacksonville
Randy Cospers	Oxford
Dennis Reaves	Calhoun County
Joan McKinney	Anniston
Patricia Green	Hobson City
Frank Thomas	Weaver
Chris Gann	Calhoun County
Shirley Miller	Calhoun County
Lavoy Jordan	Oxford
Tommy Thompson	Jacksonville
Ed Kimbrough	Anniston
Joe Cunningham	Hobson City
Kumira Mason	Anniston
Nelson Coleman	Jacksonville
David Thompson	JSU
Phillip Keith	Anniston

The meeting was called to order by Mr. Dennis Reaves, Chairman.

OLD BUSINESS:

Minutes of the CAC meeting of November 18, 2015, were approved on a motion by Mr. Richard Stubbs and seconded by Ms. Kumira Mason. Motion carried.

Chairman Reaves welcomed all the new members that were present. Chairman Reaves stated that Anniston, Jacksonville, Oxford and Hobson City needed to fill vacant CAC positions, and asked that all members talk with their mayors to help fill the vacant positions.

NEW BUSINESS:

Chairman Reaves called for the review of FY 16-19 TIP Update. Mr. Plunk gave the members a handout to review and stated that there had been several minor changes since the TIP was last

AGENDA

CITIZENS ADVISORY COMMITTEE

Of the

CALHOUN AREA METROPOLITAN PLANNING ORGANIZATION (MPO)

East Alabama Regional Planning and Development Commission 3rd Floor Conference Room

10:00 am

May 17, 2016

1. Call to Order

2. Introductions

3. Old Business

- a. Review of CAC minutes from March 23, 2016
- b. Approval of CAC minutes from March 23, 2016
- c. CAC Appointments and Welcome of New Members
- d. TBA

4. New Business

- a. Review FY 16-19 TIP Update (Handout)
- b. Alabama 2015 Infrastructure Report Card (Handout)
- c. More on Roundabouts?
- d. Non-Motorized Transportation Pilot Program Report (Handout)
- e. TBA

5. Other Business

- a. Other Current Transportation Projects
- b. Anniston Express and ADA Para-Transit Ridership
- c. Next CAC Meeting
- d. TBA

6. Adjourn

MINUTES
CITIZENS ADVISORY COMMITTEE (CAC)
of the Calhoun Area Metropolitan Planning Organization (MPO)
Wednesday, March 23, 2016
10:00 a.m.

Those attending:

Richard Stubbs	Calhoun County
Marshall Shaddix	Oxford
Jerry Lewallen	Weaver
Jack Plunk	EARPDC / MPO
Jamie Etheredge	Jacksonville
Dr. Mike Kimberly	Anniston
Dennis Reaves	Calhoun County
Joan McKinney	Anniston
Steve Akers	Oxford
Richard Lindblom	Jacksonville
Chris Gann	Calhoun County
Mike Mathews	Anniston Army Depot
Dr. David West	Calhoun County
Tommy Thompson	Jacksonville
Joe Cunningham	Hobson City
Nelson Coleman	Jacksonville
Brandon Freeman	Oxford

The meeting was called to order by Mr. Dennis Reaves, Chairman.

OLD BUSINESS:

Minutes of the CAC meeting of January 27, 2016, were approved on a motion by Mr. Tommy Thompson and seconded by Dr. David West. Motion carried.

Chairman Reaves welcomed all the new members that were present. Chairman Reaves stated that Anniston, Oxford and Hobson City needed to fill vacant CAC positions, and asked that all members talk with their mayors to help fill the vacant positions.

NEW BUSINESS:

Chairman Reaves called for the Review of FY 16-19 TIP Update. Mr. Plunk gave the members a handout of the list of projects and balance of MPO funds to review. Several authorized projects are in the PE development stage and a couple more are in RoW, which are indicated in green. Hopefully a few more will let to CN on April 29th. He added that he was matching up the 9 digit project codes given by the ALDoT to the project list to get close out amounts and noticed that project #20

AGENDA

CITIZENS ADVISORY COMMITTEE

Of the

CALHOUN AREA METROPOLITAN PLANNING ORGANIZATION (MPO)

East Alabama Regional Planning and Development Commission 3rd Floor Conference Room

10:00 am

July 27, 2016

1. Call to Order
2. Introductions
3. Old Business
 - a. Review of CAC minutes from May 17, 2016
 - b. Approval of CAC minutes from May 17, 2016
 - c. CAC Appointments and Welcome of New Members
 - d. TBA
4. New Business
 - a. PUBLIC INVOLVEMENT MEETING - Formal Amendment to FY 16-19 TIP
 - b. Review FY 16-19 TIP Update (Handout)
 - c. MPO Projects Currently Under Construction
 - d. National Infrastructure Investment at 30 Year Low (Handout)
 - e. Global Shipping Routes to Change (Handout)
 - f. TBA
5. Other Business
 - a. Other Current Transportation Projects
 - b. Anniston Express and ADA Para-Transit Ridership
 - c. Next CAC Meeting
 - d. TBA
6. Adjourn

MINUTES
CITIZENS ADVISORY COMMITTEE (CAC)
of the Calhoun Area Metropolitan Planning Organization (MPO)
Wednesday, May 17, 2016
10:00 a.m.

Those attending:

Jerry Lewallen -	Weaver
Marshall Shaddix -	Oxford
Lavoy Jordan -	Oxford
Jack Plunk -	EARPDC / MPO
Albertha Grant -	EARPDC Executive Director
Jamie Btheredge -	Jacksonville
Dr. Mike Kimberly -	Anniston
Dennis Reaves -	Calhoun County
Joan McKinney -	Anniston
Steve Akers -	Oxford
Richard Lindblom -	Jacksonville
Chris Gann -	Calhoun County
Patricia Green -	Hobson City
Dr. David West -	Calhoun County
Tommy Thompson -	Jacksonville
Shirley Miller -	Calhoun County
Robert Pyles -	Calhoun County
Adam Hunter -	Weaver
Lamar Sims -	Jacksonville
Jerome Freeman -	Calhoun County
Kyle Warmack -	Jacksonville

The meeting was called to order by Mr. Dennis Reaves, Chairman.

OLD BUSINESS:

Minutes of the CAC meeting of March 23, 2016, were approved on a motion by Mr. Marshall Shaddix and seconded by Mr. Chris Gann. Motion carried.

Chairman Reaves asked if there were any new members present, then stated that Anniston, Oxford and Hobson City needed to fill vacant CAC positions, and asked that all members talk with their mayors to help fill the vacant positions.

AGENDA

CITIZENS ADVISORY COMMITTEE

Of the

CALHOUN AREA METROPOLITAN PLANNING ORGANIZATION (MPO)

East Alabama Regional Planning and Development Commission 3rd Floor Conference Room

10:00 am

November 16, 2016

- ✓ 1. Call to Order
- ✓ 2. Introductions
- ✓ 3. Old Business
 - ✓ a. Review of CAC minutes from September 21, 2016
 - ✓ b. Approval of CAC minutes from September 21, 2016
 - ✓ c. CAC Appointments and Welcome of New Members
 - d. TBA
4. New Business
 - ✓ a. Review FY 16-19 TIP Update (Handout)
 - ✓ b. Review Projects Authorized During FY 2016 (Handout)
 - ✓ c. Summary FY 16 AmTrak Ridership
 - ✓ d. Summary FY 16 Bicycle Safety Education
 - ✓ e. Time/Volume Data on Minor Arterials (Handout)
 - ✓ f. Article – Adapting Communities for an Aging Population (Handout)
 - ✓ g. TBA
5. Other Business
 - ✓ a. Other Current Transportation Projects
 - ✓ b. Anniston Express and ADA Para-Transit Ridership
 - c. Next CAC Meeting *JAN 25TH*
 - d. TBA
6. Adjourn

MINUTES
CITIZENS ADVISORY COMMITTEE (CAC)
of the Calhoun Area Metropolitan Planning Organization (MPO)
Wednesday, September 21, 2016
10:00 a.m.

Those attending:

Richard Stubbs	Calhoun County
Jerry Lewallen	Weaver
Marshall Shaddix	Oxford
Patricia Green	Hobson City
Jack Plunk	EARPDC / MPO
Nelson Coleman	Jacksonville
Jamie Etheredge	Jacksonville
Joan McKinney	Anniston
Dennis Reaves	Calhoun County
Randy Cosper	Oxford
Steve Akers	Oxford
Joe Cunningham	Hobson City
Chris Gann	Calhoun County
Tim Huddleston	Calhoun County
Richard Lindblom	Jacksonville
Tommy Thompson	Jacksonville
David West	Calhoun County
Jerome Freeman	Calhoun County

The meeting was called to order by Mr. Dennis Reaves, Chairman.

OLD BUSINESS:

Minutes of the CAC meeting of July 27, 2016, were approved on a motion by Mr. Tim Huddleston and seconded by Mr. Richard Stubbs. Motion carried.

Chairman Reaves stated that Anniston, Oxford and Hobson City needed to fill vacant CAC positions, and asked that all members talk with their mayors to help fill the vacant positions.

Chairman Reaves asked Mr. Plunk if he had any responses to the concerns that the CAC addressed at their last meeting about the accidents on Hwy 78 in Oxford around the Anniston Industrial Park. It was stated that the City of Anniston had done a traffic study last year but no results were known. Mr. Plunk added that the City would also like to hear from the employers in the Industrial Park about this issue. Mr. Plunk explained that on pages 5 & 6 in the agenda packet were the email responses he received from Mr. Shannon Jones of ALDoT and Mr. Toby Bennington from the City of Anniston



**Alabama Clean Water Partnership - Coosa River Basin
Middle Coosa Sub-Basin Meeting
February 18, 2016 ~ 10:00 A.M. - 12:00 P.M.
Oxford Civic Center ~ Oxford, Alabama**

AGENDA

Welcome & Introductions	10:00-10:10	Chris Gann
Review Meeting Summary Old Business/Follow Up	10:10-10:20	Chris Gann
“USDA-NRCS Practices & Water Quality” Questions/Comments	10:20-10:55	Jody Burdette, District Conservationist
New Business/Planning	10:55-11:15	Chris Gann
Partner Updates	11:15-11:50	ALL
ADEM		
Calhoun County Extension		
Calhoun County Stormwater Cooperative		
CCWA		
Coosa Valley RC&D		
Logan Martin Lake Protection Association		
NRCS		
SWCD		
ADPH		
Other Partners		
Closing Remarks Set Next Meeting Date	11:50-12:00	Chris Gann
Adjourn	12:00	

**Heldi Richards, Coosa Basin Facilitator
Office: (256) 253-2454 Cell: (256) 610-4993
heldivrRichards@outlook.com**

Thanks for your support of the Coosa River Clean Water Partnership!

Basin Sponsors:

**Coosa Valley RC&D
Alabama Mountains, Rivers and Valleys RC&D
Alabama Department of Environmental Management
Westervelt Ecological Services
Logan Martin Protection Association**

MIDDLE COOSA SUB-BASIN MEETING
Oxford Civic Center ~ Oxford, Alabama
February 18, 2016 ~ 10:00 – 12:00
MINUTES

Attendees: Chris Gann (Calhoun County); Taylor Griswell (ADEM); Jeramy Ward (City of Gadsden); Missy Middlebrooks (ADEM); Jody Burdette (USDA-NRCS); Charity Mitcham (St. Clair SWCD); Renee Raney (Georgia-Alabama Land Trust); Jennifer Yates (Calhoun SWCD); Linda Ruethemann (LMLPA); and Heidi Richards (Coosa Basin Facilitator).

Gann: Welcomed everyone and self- introductions were made around the room.

Gann: Asked everyone to review the Minutes from last meeting. There being no corrections, Mitcham made a motion, seconded by Gann to accept Minutes as written. He then introduced our guest speaker, Jody Burdette with USDA-NRCS. Burdette is the District Conservationist and serves Calhoun and Cleburne Counties.

Presentation

Burdette gave a very informative and successful presentation on NRCS practices; how they benefit citizens both economically and environmentally. He also showed how most practices can have a direct link to water quality. Burdette answered questions during and after presentation. He gave contact information for those stakeholders interested in acquiring a copy of presentation.

Planning

Gann addressed the group asking what they would like to see done this year; keeping in mind ADEM would like to see a "success story" with on-the-ground project(s). Griswell and Middlebrooks answered groups' questions concerning possible different locations. Ward has a few sites in mind that he will check on and let us know. Middlebrooks gave examples of landowner cost share options and reminded group that 'existing funds' have to be spent by this September.

Also, Mitcham (St. Clair) and Ward (Etowah) expressed an interest in having a NEMO Workshop. Middlebrooks volunteered to assist with both. With everyone's schedules, we are looking at late Summer, early Fall to hold events.

Partner Updates

Griswell (ADEM): 303(d) List went out for a 30-day public review on February 7, 2016.

Raney (Conservation Education Institute): Stated that with current duties with the Conservation Education Institute, she will not be officially coordinating the CCWA but is committed to the project as a CCWA member/stakeholder. Raney has a meeting scheduled to discuss suggestions for the sustainability of the CCWA with the primary funding group. The CCWA members/stakeholders will decide the next step for CCWA. She will communicate with us at next meeting. Also, reminded us that potentially FREE (with LLBG board approval) meeting space is available at the Longleaf Botanical Gardens.

Gann (Calhoun County Storm Water Cooperative): Will be checking to see if rain barrel installation in Jacksonville is still a viable project.

Richards (RC&D): Made a brief statement about on-going projects and upcoming sign-up period.

Logan Martin Lake Protection Association (Ruethemann): 1.) LMLPA will be doing their First *Frog Walk* on April 23, 2016 at Lakeside Park in Pell City, 7:00-9:00 P.M. 2.) Benjamin Moore Company (paint manufacturers) in Pell City has requested to have 3 employees trained to be regular monthly water monitors on Fishing Creek behind their plant. The training is to take place Feb 12th with regular monitoring on-going. As an LMLPA/AWW trainer, Linda will provide the training." Ruethemann gave us several examples of the wonderful projects this company is doing through their program called, "Corporate Lands for Learning."

St. Clair SWCD (Mitcham): 1.) Announced the St. Clair County Water Festival will be on April 19, 2016. 2.) Lakeside Park will be installing pet waste stations. 3.) On March 23rd, Alabama will be adopting a new logo, "Conserve Alabama." Instead of St. Clair County Soil and Water Conservation District, each county will be their name + Conservation District. (St. Clair County Conservation District)

Gann: Set next meeting date: Next meeting date is tentatively set for Thursday, May 26, 2016 at the same time and location. (Pending possibility of future project.)

There being no further business, meeting adjourned.



Alabama Clean Water Partnership - Coosa River Basin
 Middle Coosa Sub-Basin Meeting
 May 26, 2016 ~ 10:00 A.M. - 12:00 P.M.
 Oxford Civic Center (Room #222) ~ Oxford, Alabama

AGENDA

✓ Welcome & Introductions	10:00-10:10	Chris Gann
✓ Review Meeting Summary Old Business/Follow Up	10:10-10:20	Chris Gann
✓ "Web of Goodness: CEI and Partnerships Questions/Comments	10:20-10:55	Renee Raney
✓ New Business/Planning	10:55-11:15	Chris Gann
✓ Partner Updates	11:15-11:50	All

ADEM

- ✓ Calhoun County Extension — TAKE PRIDE IN JACKSONVILLE^{CLEAN UP}
- ✓ Calhoun County Stormwater Cooperative
- ✓ CCWA — STILL HAS FUNDING FROM EASTMAN^{APRIL 23,}
- ✓ Coosa Valley RC&D — FOR 1 MORE YR. ^{EARTH DAY}
- ✓ Logan Martin Lake Protection Association — ¹⁸⁻²⁰

- ✓ NRCS
- ✓ SWCD -
- ✓ ADPH

Other Partners ADDING 5 OF WASTE STATIONS		
Closing Remarks	11:50-12:00	Chris Gann
Set Next Meeting Date		
Adjourn	12:00	

Heidi Richards, Coosa Basin Facilitator
 Office: (256) 253-2454 Cell: (256) 610-4993
 heidivrichards@outlook.com

Thanks for your support of the Coosa River Clean Water Partnership!

- Basin Sponsors:
- Coosa Valley RC&D
 - Alabama Mountains, Rivers and Valleys RC&D
 - Alabama Department of Environmental Management
 - Logan Martin Protection Association



**Coosa River Basin Clean Water Partnership
Steering Committee Meeting
November 3, 2016 10:00 a.m. - 12:00 p.m.
Shelby County Health Department
2000 County Services Dr., Pelham, Alabama 35124-6128**



AGENDA

Welcome	10:00 am	Lem Burell
<u>ACWP Update</u>		Lem Burell
<u>Basin Funds Report</u>		Lem Burell

Action: Approve/Disapprove Basin Funds used to support Facilitator when ADEM Grant Funds were exhausted.

Basin Kiosk Placement Decision

**Moved from Little River Canyon Center.
Decision: Where to move it? Primary Proposal: Pell City Library**

Another Coosa River Basin Conference?

**Last Conference was October 8, 2015
Decision: Do we want to hold a conference in 2017?**

Sub-Basin Reports

Steering Committee Members

**Upper Coosa – not currently meeting as a sub-basin
Middle Coosa- next sub-basin meeting November 15 at Oxford Civic Center at 10 a.m.
Lower Coosa - next sub-basin meeting December 14 at Water Course, Clanton, at 10 a.m.**

Partner Reports

ADEM	Missy Middlebrooks/Others
River Keeper	Frank Chitwood
Forestry – Please remember all our Forestry partners and responders as they battle many wildfires during our exceptional period of drought.	
Other Partner Updates	All

Next Meeting Date: February 9, 2017 proposed

Setting Other 2017 Meeting Dates: May 11, August 10, November 9 proposed

Adjourn

Sponsors

**Coosa Valley RC&D, Alabama Mountains, Rivers and Valleys RC&D,
Alabama Department of Environmental Management, Westervelt Ecological Services.**

Thanks for your support of the Coosa River Clean Water Partnership!

Choccolocco Creek Watershed Alliance

March 30, 2016

Agenda

Location: Classic Too on Noble Street (across the street from Classic on Noble)

Time: 11:30 a.m. to 1:00 p.m.

- **Introductions**
- **Organizational Announcements**
 - Co-chair
 - Coordinator Position
- **Preparation for Upcoming Events**
 - Renew Our Rivers (April 9 – Highway 77 Boat ramp)
 - Get Outdoors Day (May 14)
- **Highlights of CCWA History and Organizational Procedures**
 - Goals and Objectives
 - Guiding Principals
 - Consideration/Election of New Members
 - Current Action Plan

Executive Session (All Voting Members)

- **Potential Options for the Organizational Path Forward**
- **Next Meeting Date (Proposed May 31, 2016)**

Tentative Topics for Next Meeting

- Review/Update Guiding Principles (If Needed)
- Nominations/Election of Co-Chair
- Preparation for Upcoming Events
- Follow up on Organizational Option(s) Membership Decides to Pursue and Make Final Decision
- Update Action Plan

Lunch provided by:

EASTMAN

27th Annual Nonpoint Source Conference

January 20, 2016



OUR WATER. 
OUR RESPONSIBILITY.

Renaissance Hotel & Spa at the Convention Center
Montgomery, Alabama



Home	Offices	Government	Employment	Links
------	---------	------------	------------	-------

Home | Recycling Office | Yearly Totals

- [Drop-Off Centers](#)
- [Waste/Recycle Facts](#)
- [Composting](#)
- [Yearly Totals](#)
- [Education Outreach](#)
- [Waste Totals](#)
- [Department Home](#)

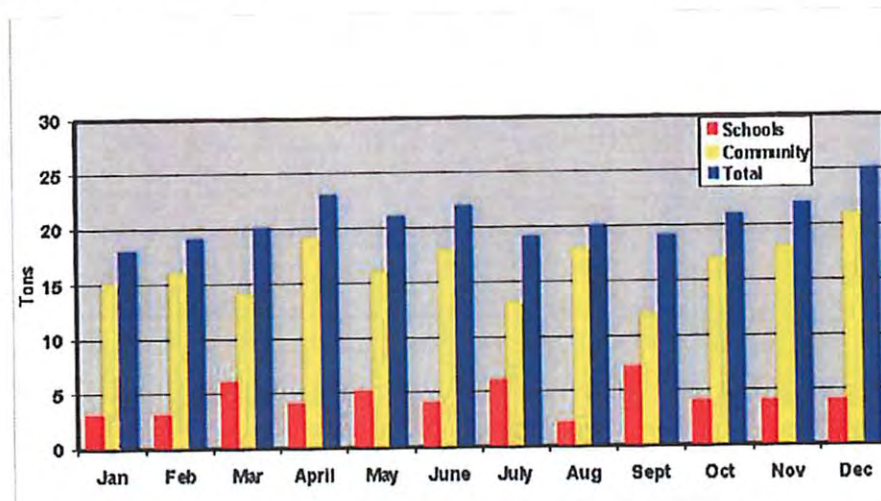
Office:
Bynum Leatherwood Rd

Mail: Recycling Office
1702 Noble Street
Suite 101
Anniston, AL 36201

Phone: 256-241-2942
Fax: 256-231-1747
[Email](#)

Recycling Facts for Calhoun County Alabama - How We are Making a Difference

Thanks to efforts in the county, more than 540 tons of material was recycled in Calhoun County and kept out of our waste stream. Below are statistics showing how we are making a difference in our environment:



or 1,090,000 lbs. of Recycled Material

545 Tons

[About Us](#) | [Privacy Policy](#) | [Contact Us](#) | ©2014 Calhoun County Alabama



Home	Offices	Government	Employment	Links
----------------------	-------------------------	----------------------------	----------------------------	-----------------------

[Home](#) | [Recycling Office](#) | [Drop-Off Centers](#)

- Drop-Off Centers**
- Waste/Recycle Facts**
- Composting**
- Yearly Totals**
- Education Outreach**
- Waste Totals**
- Department Home**

Office:
Bynum Leatherwood Rd

Mail: Recycling Office
1702 Noble Street
Suite 101
Anniston, AL 36201

Phone: 256-241-2942
Fax: 256-231-1747
[Email](#)

Recycling Drop-Off Centers in Calhoun County

These are in addition to our main Recycling Center located at the intersection of Bynum Leatherwood Road and Old Gadsden Highway.



Alexandria High School

Newspaper
Office Paper
Aluminum Cans
Cardboard



Weaver City Park

Cardboard
Newspaper
Office Paper
Aluminum Cans



Wellborn High School

Cardboard
Newspaper
Aluminum Cans



**Ohatchee
near County Barn**

Newspaper
Cardboard
Aluminum Cans



**Winn Dixie
(Noble Street)**

Cardboard
Plastic
Newspaper
Mixed Paper
Aluminum Cans



**Communnity Garden
(McClellan)**

Cardboard
Plastic
Newspaper
Mixed Paper
Aluminum Cans



Standard Operating Procedure

SOP#: ID-1

Description: Outfall Identification and Screening

Purpose: SOP to establish a uniform procedure for completing outfall identification and screening in accordance with Illicit Discharge Detection and Elimination Guidance Manual.

Prepared By: Chris Gann **Approved By:** Brian Rosenbalm **Effective Date:** 9/18/14

References

1. Illicit Discharge Detection and Elimination Guidance Manual

Personnel Qualifications

This SOP is written for Calhoun County staff responsible for implementing the Storm Water Management Program. Calhoun County staff performing the outfall identification and screening shall have an understanding of the methods, procedures, and protocols of identifying and screening outfalls in accordance with the Illicit Discharge Detection and Elimination Guidance Manual.

Procedural Steps

1. Preparation
 - a. Identify outfalls scheduled for screening
 - b. Review maps (Highway, 7.5 Minute Quadrangle, GIS, etc.) to determine locations
 - c. Upload coordinates of each outfall into hand held GPS unit
2. Equipment Needed
 - a. ORI inspection forms
 - b. Clip board and pencil
 - c. Hand Held GPS unit
 - d. Camera

- e. Boots
- f. Gloves
- g. Waders
- h. Machete/bush ax
- i. Sample collection supplies
 - i. Sample bottles
 - ii. Extension pole
 - iii. Test strips
 - iv. Water chemistry kit
 - v. Latex gloves
- j. Maps
- k. Measuring equipment
 - i. Tape
 - ii. Measuring wheel
 - iii. Stopwatch
- l. Hand sanitizer
- m. First aid kit
- 3. Determine when to conduct field screening
 - a. During dry season
 - b. After a dry period of at least 72 hours
 - c. Identify field crew
 - d. Drive to outfall location
- 4. Outfall Screening – Complete ORI Form
 - a. Background data
 - b. Outfall description
 - i. Type
 - ii. Material
 - iii. Shape
 - iv. Dimensions
 - v. Presence of flow
 - c. Quantitative Characterization (for flowing outfalls only)
 - i. Flow
 - ii. Temperature
 - iii. pH

Calhoun County SWMP Plan

- iv. Ammonia
- d. Physical Indicators (for flowing outfalls only)
 - i. Odor
 - ii. Color
 - iii. Turbidity
 - iv. Floatables
- e. Outfall condition
- 5. If a flowing outfall has suspect discharge
 - a. Trace the suspect discharge to its source
 - b. If the source of suspect discharge can be identified and is from:
 - i. Groundwater? Note on ORI form
 - ii. Failing septic system? Contact County Health Department
 - iii. Leaking sanitary sewer system? Contact responsible municipality and/or utility.
 - iv. Other? Identify and notify responsible party.
 - c. If the source of the suspect cannot be identified
 - i. At the discretion of the field team, collect a sample of the suspect discharge
 - ii. Preserve and pack sample
 - iii. Complete chain of custody form
 - iv. Deliver sample(s) to laboratory for analysis
- 6. Post Field Work Activities
 - a. Document field activities
 - i. Outfalls screened that had no suspect illicit discharges
 - ii. Outfalls screened that had suspect illicit discharges and action taken
 - b. If additional outfalls were identified, update outfall inventory and outfall map
 - c. File ORI Forms
 - d. Obtain analytical data for samples submitted to laboratory
 - e. Evaluate analytical data and follow up as needed

Outfall Reconnaissance List

BRIDGE IDENTIFICATION CROSS REFERENCE REPORT

May 15, 2017

Page 1 of 5

Report Criteria

Area: All District: All County: Calhoun City: All MPO: All Maint: County Hwy Agency Insp Resp: County Highway Agency
 LRS Route: All Status: All Sort By Bridge ID

AREA	BIN	STRUCTURE NUMBER	RECORD TYPE	FACILITY CARRIED	FEATURES INTERSECTED	LATITUDE	LONGITUDE
Alexander City	000105	OCO0149 080000055Z00	1	Century Rd. 1915	TALLAHATCHEE CREEK	33:52:27.84	85:43:46.16
Alexander City	000711	OCO0000 080000044Z00	1	HOWELL RD.	LADIGA CREEK RELIEF	33:57:03.21	85:34:49.16
Alexander City	000712	OCO0000 080000045Z00	1	HOWELL RD.	LADIGA CREEK	33:57:08.49	85:34:46.57
Alexander City	000714	OCO0000 080000171Z00	1	CC ROAD	DRY CREEK	33:33:45.72	85:47:35.89
Alexander City	000777	ICO0030 080000015Z00	1	OLD DOWNING MILL	CHOCOLOCCO CREEK	33:38:40.88	85:41:45.89
Alexander City	000817	ICO0081 080000010X00	1	BOILING SPR. RD.	CHOCOLOCCO CREEK	33:38:22.67	85:47:24.67
Alexander City	000948	OCO0000 080000112Z00	1	OLD JVILLE HWY	CREEK	33:45:14.18	85:47:16.18
Alexander City	001001	ICO0084 080000096Z00	1	PRICKETT TRAIL	TALLAHACHEE CREEK	33:49:00.89	85:51:39.13
Alexander City	001007	OCO0141 080000114Z00	1	HOLLY ROAD	BRANCH	33:43:01.82	85:52:27.26
Alexander City	001151	ICO0088 080000126Z00	1	OLD ANN-GAD. HWY	OHATCHEE CREEK	33:51:24.16	85:55:04.13
Alexander City	001158	ICO0000 080000092Z00	1	ANGEL STATION RD.	CREEK	33:50:18.00	85:50:24.00
Alexander City	001180	OCO0008 080000018Z00	1	CHOSEA SPR. RD. E	BRANCH	33:41:38.73	85:40:26.43
Alexander City	001188	OCO0008 080000018Z00	1	IRON CITY CUTOFF	CHOCOLOCCO CREEK	33:39:50.92	85:41:14.74
Alexander City	001207	OCO0013 080000097Z00	1	ALEX-WELL RD.	ALEXANDRIA CREEK	33:48:13.45	85:52:55.33
Alexander City	001208	ICO0013 080000100Z00	1	ALEX-WELL RD.	CREEK	33:49:12.00	85:53:30.00
Alexander City	001325	ICO0149 080000057Z00	1	CENTURY ROAD	TALLAHATCHEE CREEK	33:52:45.51	85:43:22.37
Alexander City	001500	OCO0141 080000115Z00	1	Choctaw St.	CANE CREEK	33:44:01.99	85:52:39.16
Alexander City	001596	OCO0053 080000121Z00	1	OLD GAD-ANN HWY.	SO RAILROAD	33:41:36.33	85:49:50.87
Alexander City	001608	ICO0069 080000071Z00	1	NESBIT LAKE RD.	OHATCHEE CREEK	33:55:55.28	85:48:25.99
Alexander City	001768	OCO0025 080000128Z00	1	ALEX-JACK HWY	ALEXANDRIA CREEK	33:48:13.34	85:53:00.68
Alexander City	001786	ICO0081 080000029Z00	1	BROWN BRIDGE RD.	BRANCH	33:47:38.18	85:38:47.25
Alexander City	001800	ICO0072 080000078Z00	1	Wellington Rd.	BRANCH	33:49:28.83	85:53:22.95
Alexander City	001801	ICO0072 080000077Z00	1	WELLINGTON RD.	BRANCH	33:49:34.47	85:52:00.38
Alexander City	001885	OCO0000 080000074Z00	1	GADSDEN ROAD	BRANCH	33:49:25.04	85:48:54.11
Alexander City	001914	OCO0009 080000014Z00	1	RIDDLE FARM RD.	EGONIAGA CREEK	33:38:19.98	85:41:28.35
Alexander City	001927	OCO0017 080000132Z00	1	MI View Rd.	TALLAHATCHEE CREEK	33:48:00.58	85:55:17.31
Alexander City	001928	ICO0017 080000133Z00	1	PEEK HILL RD.	OHATCHEE CREEK	33:50:29.44	85:58:38.72
Alexander City	001989	ICO0027 080000043Z00	1	WILSON MINOR RD.	BRANCH	33:56:43.02	85:33:21.11
Alexander City	002011	OCO0047 080000152Z00	1	JACKSON TRACE RD.	ACKER CREEK	33:41:39.78	88:04:28.78
Alexander City	002029	ICO0085 080000111Z00	1	JACKSONVILLE ST.	LITTLE TALLAHATCHEECREEK	33:48:46.89	85:47:09.39
Alexander City	002030	OCO0086 080000141Z00	1	Grayton Rd.	OHATCHEE CREEK	33:47:53.11	85:58:45.21
Alexander City	002031	OCO0089 080000089Z00	1	NESBIT LAKE RD.	TALLAHATCHEE CREEK	33:50:10.08	85:48:59.32
Alexander City	002048	ICO0100 080000149Z00	1	SULPHUR SPR. RD.	ACKER CREEK	33:41:08.49	88:03:52.37
Alexander City	002049	OCO0111 080000041Z00	1	Philad Church Rd.	BRANCH	33:55:28.57	85:32:27.26
Alexander City	002050	OCO0111 080000042Z00	1	4 MI E US 278	BRANCH	33:58:22.27	85:32:53.31
Alexander City	002053	ICO0133 080000130Z00	1	MCCULLARS LANE	CREEK	33:47:01.27	85:55:41.97
Alexander City	002058	OCO0155 080000051Z00	1	PIEDMONT CUTOFF	BRANCH	33:55:59.43	85:37:53.88
Alexander City	002068	ICO0247 080000017Z00	1	EEARL ROBERTS RD.	JOSEPH CREEK	33:40:58.43	85:40:04.18
Alexander City	002378	OCO0050 080000151Z00	1	1 MI W AL 77	CREEK	33:41:27.25	88:04:48.84
Alexander City	002388	OCO0058 080000158Z00	1	FISH HATCHERY RD.	CREEK	33:38:55.38	88:00:02.37
Alexander City	002410	OCO0072 080000078Z00	1	2 MI W JVILLE	TALLAHATCHEE CREEK	33:49:01.38	85:48:28.09
Alexander City	002428	OCO0085 080000028Z00	1	RED ROAD 65	COTTAQUILLA CREEK	33:45:19.16	85:41:10.34

BRIDGE IDENTIFICATION CROSS REFERENCE REPORT

May 16, 2017

Page 2 of 5

AREA	BIN	STRUCTURE NUMBER	RECORD TYPE	FACILITY CARRIED	FEATURES INTERSECTED	LATITUDE	LONGITUDE
Alexander City	002445	ICO0098 08000052Z00	1	CO 98	BRANCH	33:52:56.69	85:42:46.78
Alexander City	002447	ICO0104 08000053Z00	1	OLD PIED-GAD HWY	BRANCH	33:57:10.93	85:42:35.50
Alexander City	002953	OCO0057 080000173Z00	1	3.5 MI N ANNISTON	CANE CREEK	33:44:19.26	85:50:50.99
Alexander City	002983	OCO0116 080000089Z00	1	SEVEN SPR. RD.	BRANCH	33:52:00.11	85:53:28.70
Alexander City	002970	OCO0163 080000137Z00	1	5 MI NE OHATCHEE	OHATCHEE CREEK	33:48:18.72	85:57:31.35
Alexander City	002971	ICO0163 080000138Z00	1	BONDS RD.	CREEK	33:50:41.16	85:58:10.80
Alexander City	003135	OCO0154 08000030Z00	1	4 MI E ALA 9	CHOCOLOCOCO CREEK	33:48:09.22	85:38:48.62
Alexander City	003257	ICO0048 080000144Z00	1	OHATCHEE CUTOFF	OHATCHEE CREEK	33:46:48.93	85:59:53.28
Alexander City	003312	OCO0082 080000081Z00	1	HOLDER LN.	BRANCH	33:53:14.15	85:44:32.89
Alexander City	003333	ICO0109 080000183X00	1	COLDWATER PUMP RD	COLDWATER CREEK	33:37:17.89	85:55:14.01
Alexander City	003358	OCO0162 080000088Z00	1	GILBERTS FERRY RD.	CREEK	33:52:37.77	85:58:43.64
Alexander City	003460	OCO0045 080000091Z00	1	CEDAR SPR. RD.	TALLAHATCHEE CREEK	33:48:03.13	85:50:19.85
Alexander City	003753	ICO0038 080000170Z00	1	EULATON PIKE RD.	BRANCH	33:39:10.83	85:52:37.63
Alexander City	003781	OCO0049 080000084Z00	1	MCCELLELLAN RD.	BRANCH	33:46:33.81	85:52:23.91
Alexander City	003845	ICO0093 080000157Z00	1	MUDD ST.	CANE CREEK	33:43:45.03	88:02:42.30
Alexander City	004041	ICO0017 080000134Z00	1	PEEKS HILL RD.	CREEK	33:51:27.95	85:58:31.01
Alexander City	004067	ICO0041 080000095Z00	1	POST OAK RD.	CREEK	33:48:02.33	85:50:53.60
Alexander City	004136	ICO0112 080000083Z00	1	OLD BROADWELL MIL	LITTLE TALLAHATCHEECREEK	33:48:18.00	85:47:38.00
Alexander City	004229	ICO0000 080000169Z00	1	LYNNE DRIVE	BRANCH	33:39:21.98	85:53:39.11
Alexander City	004315	ICO0015 080000148Z00	1	NUNNALLY LAKE RD	CREEK	33:51:12.00	85:58:36.00
Alexander City	004412	OCO0070 080000040Z00	1	VIGO RD.	TERRAPIN CREEK	33:54:53.08	85:32:50.35
Alexander City	004578	OCO0015 080000147Z00	1	WARRIOR RD.	OHATCHEE CREEK	33:47:30.83	85:59:32.11
Alexander City	004645	OCO0073 080000155X00	1	BOILING SPR. RD.	BRANCH	33:46:10.50	85:59:30.03
Alexander City	004667	OCO0093 080000156Z00	1	MUDD ST.	BRANCH	33:41:43.25	88:03:09.39
Alexander City	004671	OCO0114 080000093Z00	1	HOLLAND FIN. RD.	WEAVER CREEK	33:47:13.56	85:50:24.41
Alexander City	004822	OCO0013 080000099Z00	1	ALEX-WELL RD.	TALLAHATCHEE CREEK	33:48:13.50	85:53:18.08
Alexander City	004876	OCO0041 080000080Z00	1	PLEASANT VALL. RD	BRANCH	33:51:11.75	85:48:48.77
Alexander City	004885	ICO0047 080000158X00	1	MITCHELLVILLE RD	ACKER CREEK	33:40:49.31	88:03:40.11
Alexander City	004948	ICO0109 080000164X00	1	1.2 MI N ALA 202	BRANCH	33:38:37.71	85:54:38.43
Alexander City	004950	OCO0117 080000107Z00	1	ADERHOLT MILL RD	LITTLE TALLAHATCHEECREEK	33:46:46.22	85:45:52.44
Alexander City	004951	OCO0117 080000108Z00	1	ADERHOLT MILL RD.	LITTLE TALLAHATCHEECREEK	33:46:42.95	85:48:11.02
Alexander City	004970	OCO0192 080000136Z00	1	6 MI NE OHATCHEE	TRIB. OHATCHEE CREEK	33:50:00.50	85:57:33.68
Alexander City	005281	OCO0073 080000153Z00	1	3 MI W AL 77	ACKER CREEK	33:42:18.09	88:06:10.30
Alexander City	005282	OCO0073 080000154Z00	1	2 MI W AL 77	CANE CREEK	33:43:20.76	88:04:39.35
Alexander City	005294	ICO0088 080000085Z00	1	HOLLINGSWORTH DR.	CREEK	33:54:58.20	85:53:08.65
Alexander City	005593	OCO0067 080000049Z00	1	GNATVILLE RD.	BRANCH	33:57:25.69	85:39:00.99
Alexander City	006107	ICO0000 080000080Z00	1	ASBERRY	BRANCH	33:52:58.81	85:44:30.82
Alexander City	006204	OCO0014 080000118Z00	1	64TH STREET	BRANCH	33:43:48.47	85:49:58.21
Alexander City	006220	ICO0019 080000082X00	1	ROY WEBB RD.	FLAT TIRE CREEK	33:51:10.80	85:45:30.59
Alexander City	006319	OCO0054 080000119Z00	1	LENLOCK LANE	BRANCH	33:43:22.27	85:50:03.22
Alexander City	006337	OCO0069 080000175Z00	1	STEINBURG RD.	NANCES CREEK	33:57:21.60	86:35:26.32
Alexander City	006382	OCO0133 080000131Z00	1	1.5 MI W US 431	ALEXANDRIA CREEK	33:47:04.12	85:55:16.82
Alexander City	006643	OCO0063 080000072Z00	1	WILLIAMS RD.	COFFEE CREEK	33:54:38.90	85:48:43.38
Alexander City	006714	ICO0167 080000104X00	1	RAILROAD DRIVE	CREEK	33:48:38.00	85:53:18.00
Alexander City	006729	ICO0207 080000143Z00	1	INGRAM WELLS RD.	TALLAHATCHEE CREEK	33:47:49.00	85:57:48.00
Alexander City	006837	OCO0000 080000054Z00	1	1 MI W AL 21	TALLAHATCHEE CREEK	33:52:11.46	85:45:01.45

BRIDGE IDENTIFICATION CROSS REFERENCE REPORT

May 15, 2017

Page 3 of 5

AREA	BIN	STRUCTURE NUMBER	RECORD TYPE	FACILITY CARRIED	FEATURES INTERSECTED	LATITUDE	LONGITUDE
Alexander City	008838	ICO0000 080000127Z00	1	WELLINGTON RD.	BRANCH	33:48:24.00	85:53:54.00
Alexander City	008931	ICO0008 080000019Z00	1	CHOSEA SPR. RD.	CHOCOLOCCO CREEK	33:41:38.30	85:41:16.22
Alexander City	007056	OCO0054 080000120Z00	1	.5 MI WALA 21	SO RAILROAD	33:43:24.51	85:49:18.20
Alexander City	007570	ICO0000 080000183Z00	1	MEDDERS ROAD	BRANCH	33:43:15.57	85:49:55.87
Alexander City	007948	OCO0018 080000005X00	1	FRIENDSHIP RD.	CREEK	33:35:09.08	85:48:21.71
Alexander City	008010	OCO0056 080000034X00	1	RABBITTOWN RD.	CREEK	33:49:43.94	85:37:39.82
Alexander City	008051	OCO0085 080000021X00	1	CHOCOLOCCO RD.	BRANCH	33:40:43.04	85:41:54.85
Alexander City	008052	OCO0085 080000022X00	1	CHOCOLOCCO RD.	BRANCH	33:42:18.98	85:41:53.21
Alexander City	008053	OCO0085 080000023X00	1	CHOCOLOCCO RD.	BRANCH	33:44:26.05	85:41:23.49
Alexander City	008275	OCO0015 080000146Z00	1	OHATCHEE	OHATCHEE CREEK	33:47:10.39	85:59:53.86
Alexander City	008345	OCO0045 080000090Z00	1	CEDAR SPR. RD.	WEAVER CREEK	33:48:34.40	85:49:52.17
Alexander City	008373	OCO0055 080000033Z00	1	WHITES GAP RD.	COTTAQUILLA CREEK	33:48:10.74	85:41:38.87
Alexander City	008724	OCO0018 080000007Z00	1	JEWELL RD.	LITTLE HILLABEE CREEK	33:35:10.59	85:44:45.60
Alexander City	009085	OCO0013 080000101Z00	1	READS MILL RD.	BRANCH	33:52:10.87	85:53:58.87
Alexander City	008066	OCO0013 080000102Z00	1	READS MILL RD.	OHATCHEE CREEK	33:52:17.04	85:54:00.53
Alexander City	009075	OCO0019 080000064X00	1	ROY WEBB RD.	CREEK	33:55:35.94	85:43:18.76
Alexander City	009076	OCO0019 080000065X00	1	ROY WEBB RD.	CREEK	33:58:37.88	85:42:53.45
Alexander City	009347	OCO0025 080000105X00	1	ALEX/JACK HWY	WEAVER CREEK	33:49:39.84	85:49:18.97
Alexander City	009346	ICO0025 080000106X00	1	ALEX-JACK HWY	LITTLE TALLAHATCHEECREEK	33:47:43.12	85:47:25.01
Alexander City	009424	ICO0097 080000026Z00	1	BROWN BRIDGE RD.	CHOCOLOCCO CREEK	33:47:22.88	85:39:38.00
Alexander City	009454	ICO0233 080000050Z00	1	STITTS RD.	BRANCH	33:57:00.00	85:38:48.00
Alexander City	010008	OCO0019 080000066X00	1	BALLPLAY RD.	CREEK	33:57:28.89	85:42:49.22
Alexander City	010009	ICO0019 080000067X00	1	BALLPLAY RD.	CREEK	33:57:39.59	85:42:47.13
Alexander City	010383	OCO0071 080000087Z00	1	ROCKY HOLLOW RD.	OHATCHEE CREEK	33:54:22.11	85:51:25.17
Alexander City	010408	ICO0130 080000037Z00	1	BABBLING BROOK RD	NANCES CREEK	33:54:41.18	85:35:41.61
Alexander City	010708	OCO0000 080000084Z00	1	4 MI N WILLIAMS	OHATCHEE CREEK	33:55:58.85	85:49:12.35
Alexander City	010709	ICO0000 080000126Z00	1	3 MI NE WELLINGTON	BRANCH	33:50:38.08	85:51:37.88
Alexander City	010819	OCO0237 080000031Z00	1	.3 MI E ALA 9	NANCES CREEK	33:50:46.50	85:39:40.33
Alexander City	010889	ICO0000 080000113Z00	1	MOOSE LODGE ROAD	BRANCH	33:44:59.24	85:45:52.42
Alexander City	010895	OCO0109 080000167X00	1	BYNUM-LEATH RD.	BRANCH	33:42:49.33	85:52:13.98
Alexander City	010898	OCO0109 080000168X00	1	BYNUM-LEATH RD.	BRANCH	33:42:53.88	85:52:10.69
Alexander City	011226	OCO0024 080000009Z00	1	MELLON BRIDGE RD.	CHOCOLOCCO CREEK	33:38:00.04	85:45:28.22
Alexander City	011267	ICO0097 080000024Z00	1	RAINBOW DR.	SHOAL CREEK	33:44:12.00	85:39:38.00
Alexander City	011481	OCO0092 080000086Z00	1	4 MI E US 431	OHATCHEE CREEK	33:53:47.78	85:52:32.84
Alexander City	011806	OCO0018 080000006X00	1	FRIENDSHIP RD.	BIG HILLABEE CREEK	33:35:13.26	85:45:23.31
Alexander City	011844	OCO0078 080000073Z00	1	CARPENTERS LN.	TALLAHATCHEE CREEK	33:50:25.92	85:48:53.85
Alexander City	012174	ICO0031 080000048Z00	1	GOSHEN CEM. RD.	BRANCH	33:57:24.00	85:37:30.00
Alexander City	012195	ICO0058 080000174Z00	1	WEATHERBROOK LN	BRANCH	33:45:01.18	85:45:37.17
Alexander City	012273	ICO0000 080000059Z00	1	SCOTT LANE	TALLAHATCHEE CREEK	33:52:21.21	85:44:11.69
Alexander City	012680	ICO0000 080000038Z00	1	DAILEY STREET	NANCES CREEK	33:54:18.00	88:38:24.00
Alexander City	012720	OCO0000 080000181Z00	1	CRAIG DRIVE	BRANCH	33:39:04.68	88:54:19.61
Alexander City	012797	OCO0047 080000177X00	1	BYNUM-LEATH RD.	BRANCH	33:38:39.04	85:54:33.95
Alexander City	012798	OCO0047 080000178X00	1	BYNUM-LEATH RD.	CO 072 * SCL RR	33:38:45.19	85:54:33.64
Alexander City	012812	OCO0072 080000179Z00	1	.9 MI N AL 202	BRANCH	33:38:48.61	85:54:31.81
Alexander City	012813	OCO0072 080000180Z00	1	BYNUM EXIT	BRANCH	33:38:52.33	85:54:30.25
Alexander City	012882	OCO0112 080000082Z00	1	4 MI W JVILLE	TALLASEEHATCHEE CREEK	33:48:14.89	85:49:28.55

BRIDGE IDENTIFICATION CROSS REFERENCE REPORT

May 16, 2017

Page 4 of 6

AREA	BIN	STRUCTURE NUMBER	RECORD TYPE	FACILITY CARRIED	FEATURES INTERSECTED	LATITUDE	LONGITUDE
Alexander City	012883	OCO0185 080000140Z00	1	GOODE BRIDGE RD.	TALLASSEEHATCHEE CREEK	33:47:25.40	85:58:39.70
Alexander City	013182	OCO0000 080000182Z00	1	2 MI N AL 202	BRANCH	33:39:29.12	85:54:39.68
Alexander City	013352	OCO0080 080000168Z00	1	EULATON PIKE RD.	BRANCH	33:39:15.83	85:54:05.91
Alexander City	013455	OCO0055 080000035X00	1	RABBITTOWN RD.	DRY CREEK	33:50:32.77	85:35:40.50
Alexander City	013457	OCO0100 080000150Z00	1	COUNTY LINE RD.	BRANCH	33:40:40.48	88:04:49.37
Alexander City	013630	OCO0024 08000008Z00	1	MELLON BRIDGE RD.	LITTLE HILLABEE CREEK	33:35:21.32	85:45:12.17
Alexander City	013698	OCO0185 080000123Z00	1	OLD SULF. SPR RD.	TALLAHATCHEE CREEK	33:48:57.48	85:52:23.51
Alexander City	014072	OCO0019 080000083X00	1	ROYWEBB RD.	TALLASSEEHATCHEE CREEK	33:51:50.23	85:45:22.22
Alexander City	014102	OCO0132 080000027Z00	1	1 MI E ALA 9	CHOCOLOCCO CREEK	33:44:39.37	85:40:10.09
Alexander City	014376	OCO0055 080000032Z00	1	WHITES GAP RD.	LITTLE TALLAHATCHEECREEK	33:48:41.82	85:45:33.10
Alexander City	014592	OCO0045 080000013Z00	1	DEARMANVILLE DR. N	BRANCH	33:37:45.02	85:45:28.64
Alexander City	014628	OCO0108 080000172Z00	1	MCINTOSH RD.	DRY CREEK	33:34:51.83	85:48:29.58
Alexander City	014697	OCO0003 080000139Z00	1	GREENSPORT RD	CREEK	33:51:55.07	85:58:32.50
Alexander City	014751	OCO0183 080000081Z00	1	.2 MI S AL 204	CREEK	33:50:25.12	85:50:49.73
Alexander City	014771	OCO0225 080000088Z00	1	3 MI N WILLIAMS	OHATCHEE CREEK	33:55:22.68	85:46:21.72
Alexander City	014849	OCO0013 080000089Z00	1	ALEX-WELL RD.	TALLASSEEHATCHEE CREEK	33:48:41.22	85:52:55.35
Alexander City	014919	OCO0088 080000129Z00	1	GLADDEN LANE W.	CREEK	33:48:04.77	85:55:06.97
Alexander City	014943	OCO0132 080000028Z00	1	.5 MI E ALA 9	COTTAQUILLA CREEK	33:44:39.59	85:40:50.24
Alexander City	014958	OCO0185 080000124Z00	1	MT. GILEAD RD.	OHATCHEE CREEK	33:53:58.13	85:51:55.22
Alexander City	014959	OCO0182 080000135Z00	1	3 MI W US 431	TRIB. OHATCHEE CREEK	33:51:10.83	85:58:30.19
Alexander City	015063	OCO0000 080000117Z00	1	55TH STREET	BRANCH	33:43:07.06	85:49:52.80
Alexander City	016793	OCO0041 080000095Z00	1	POST OAK ROAD	CREEK	33:48:02.93	85:50:51.69
Alexander City	016880	OCO0000 080000180Z00	1	BUD WOOD RD.	CREEK	33:39:21.24	85:53:52.53
Alexander City	017069	OCO0000 080000092Z00	1	ANGEL DR	CREEK	33:50:11.80	85:50:09.99
Alexander City	017104	OCO0130 080000037Z00	1	1 MI E ALA 9	NANCES CREEK	33:54:41.15	85:35:41.08
Alexander City	017105	OCO0247 080000017Z00	1	1 MI E ALA 9	JOSEPH CREEK	33:40:59.32	85:40:03.48
Alexander City	017108	OCO0000 080000019Z00	1	CHOSEA SPRINGS RD	CHOCOLOCCO CREEK	33:41:38.09	85:41:14.75
Alexander City	017488	OCO0000 080000128Z00	1	OLD ANN GAD HWY	OHATCHEE CREEK	33:51:23.08	85:55:03.71
Alexander City	017638	ICO0000 080000184Z00	1	STADIUM DRIVE	TRIB. ALEX CREEK	33:48:35.38	85:53:10.41
Alexander City	017782	OCO0085 080000111Z00	1	LT TALLASSEEHATCHE	JACKSONVILLE STREET	33:48:47.31	85:47:08.77
Alexander City	017798	OCO0001 080000148X00	1	NUNNALLY LAKE ROAD	UNKNOWN CREEK	33:51:12.99	85:58:33.92
Alexander City	017799	OCO00148080000057Z00	1	CENTURY ROAD	TALLASSEEHATCHEE CREEK	33:52:45.49	85:43:22.60
Alexander City	017800	PCO00081080000029X00	1	BROWN BRIDGE ROAD	SCARBROUGH CREEK	0.:00:	0.:00:
Alexander City	017802	OCO0017 080000133Z00	1	PEEKS HILL ROAD	OHATCHEE CREEK	33:50:31.52	85:58:40.47
Alexander City	017803	OCO00017080000024X00	1	RAINBOW DRIVE	SHOAL CREEK	33:44:14.45	85:39:38.20
Alexander City	018434	OCO0000 080000184X00	1	STADIUM DRIVE	TRIB TO ALEXANDRIA CREEK	33:48:34.83	85:53:10.61
Alexander City	018435	OCO0000 080000149X00	1	SULPHUR SPRINGS RO	ACKER CREEK	33:41:09.27	88:03:51.68
Alexander City	018817	OCO0000 080000158X00	1	MITCHELLVILLE RD	ACHER CREEK	33:40:49.40	88:03:39.35
Alexander City	018785	OCO0000080000183Z00	1	MEDDERS DRIVE	UNKNOWN TRIBUTARY	33:43:15.58	85:48:55.50
Alexander City	018887	OCO0133 080000130X00	1	MCCULLARS LANE	CEDAR CREEK	33:47:01.36	85:55:39.01
Alexander City	018920	OCO0183 080000139Z00	1	BONDS ROAD	UNKNOWN TRIBUTARY	33:50:41.52	85:58:09.42
Alexander City	018921	OCO0000 080000038Z00	1	DAILEY STREET	NANCES CREEK	33:54:16.49	85:38:23.79
Alexander City	018985	OCO0088 080000052Z00	1	OLD PIED-GAD HWY	UNKNOWN TRIBUTARY	33:55:48.57	85:38:38.44
Alexander City	019108	OCO0089 080000071Z00	1	NESBIT LAKE ROAD	COFFEE CREEK	33:55:55.28	85:48:25.89
Alexander City	019204	OCO0019 080000062X00	1	ROY WEBB ROAD	FLAT TIRE CREEK	33:51:10.84	85:45:30.88
Alexander City	019583	OCO0167 080000104X00	1	.25 MI E ALHWY 431	TRIB TO ALEXANDRIA CREEK	33:48:38.30	85:53:20.78

BRIDGE IDENTIFICATION CROSS REFERENCE REPORT

May 15, 2017

Page 5 of 5

AREA	BIN	STRUCTURE NUMBER	RECORD TYPE	FACILITY CARRIED	FEATURES INTERSECTED	LATITUDE	LONGITUDE
Alexander City	019584	OCO0207 080000143Z00	1	INGRAM WELLS RD.	TALLASSEEHATCHEE CREEK	33:47:47.60	85:57:45.02
Alexander City	019602	OCO0025 080000106X00	1	ALEX-JACKS HWY	TALLASSEEHATCHEE CREEK	33:47:44.38	85:47:23.31
Alexander City	019603	OCO0030 080000015Z00	1	OLD DOWNING MILL R	CHOCOLACCO CREEK	33:38:39.85	85:41:44.95
Alexander City	019604	OCO0072 080000077Z00	1	WELLINGTON ROAD	TALLASSEEHATCHEE CREEK	33:48:34.88	85:52:59.82
Alexander City	019605	OCO0093 080000157Z00	1	MUDD STREET	CANE CREEK	33:43:49.93	86:02:38.60
Alexander City	019606	OCO0019 080000067Z00	1	BALL PLAY ROAD	BALL PLAY CREEK	33:57:40.45	85:42:47.08
Alexander City	019629	OCO0061 080000029Z00	1	BROWN BRIDGE ROAD	SCARBROUGH CREEK	33:47:36.86	85:38:47.43
Alexander City	019632	OCO0086 080000085Z00	1	HOLLINGSWORTH DR	CREEK	33:54:58.27	85:53:08.98
Alexander City	019703	OCO0097 080000025Z00	1	2 MILES E AL HWY 9	CHOCOLOCCO CREK	33:47:22.62	85:39:35.61
Alexander City	020044	OCO0017 080000134Z00	1	5 MI W US 431	TALLASSEEHATCHEE CREEK	33:51:27.85	85:58:30.98
Alexander City	020350	OCO0038 080000170Z00	1	.5 MI N AL 202	BRANCH	33:39:11.09	85:52:37.99
Alexander City	020513	OCO0013 080000100Z00	1	ALEXWELL RD	TRIB TO TALLASSEEHATCHEE	33:49:12.13	85:53:30.79
Alexander City	020534	OCO0084 080000098Z00	1	PRICKETT TRAIL	TALLAHACHEE CREEK	33:48:00.78	85:51:38.84
Alexander City	020535	OCO0112 080000083Z00	1	OLD BROADWELL MILL	LITTLE TALLAHATCHEE CREE	33:48:16.37	85:47:34.61
Alexander City	020536	OCO0233 080000050Z00	1	STITTS ROAD	BRANCH	33:57:00.48	85:38:47.66
Alexander City	020537	OCO0058 080000174Z00	1	WEATHERBROOK LANE	BRANCH	33:45:01.66	86:46:38.21
Alexander City	020586	OCO0104 080000053Z00	1	OLD PIEDMONT GADSD	BRANCH	33:57:11.16	85:42:36.16
Alexander City	020587	OCO0000 080000059Z00	1	SCOTT LANE	TALLAHATCHEE CREEK	33:52:21.02	85:44:11.38
Alexander City	020695	OCO0000 080000060Z00	1	POSSUM TROT	BRANCH	33:52:56.61	85:44:30.69
Alexander City	020711	OCO0000 080000127Z00	1	Wellington Dr.	BRANCH	33:48:21.20	85:53:55.59
Alexander City	020721	OCO0000 080000125Z00	1	Ranch Road	Unknown Branch	33:50:36.08	85:51:37.88
Alexander City	020861	PCO0162 080000086Z00	1	????????????????	????????????????	0.:00:	0.:00:
Alexander City	020882	PCO0068 080000141Z00	1	????????????????	????????????????	0.:00:	0.:00:
Alexander City	020940	PCO0069 080000175Z00	1	????????????????	????????????????	0.:00:	0.:00:
Alexander City	020941	PCO0092 080000088Z00	1	????????????????	????????????????	0.:00:	0.:00:
Alexander City	020942	PCO0154 080000030Z00	1	????????????????	????????????????	0.:00:	0.:00:
Alexander City	021009	OCO0072 080000078Z00	1	Wellington Rd.	Uknown Branch	33:48:28.83	85:53:22.95

I certify the Post- Construction Stormwater Runoff on the proposed development does not significantly exceed Pre-Construction Stormwater Runoff and this proposed development is designed to withstand a minimum of a 2-yr 24-hr storm event.

Engineer